

MONTANA

2023-24

DIRECTORY

ANGUS

Montana
◆ 2023 ANGUS TOUR ◆

SEPTEMBER 19TH-21ST

SPONSORED BY MIDLAND EMPIRE ANGUS ASSOCIATION



PRST MRKT
US Postage Paid
Ballyhoo Printing
59457

Montana Angus News
PO Box 25
Whitlash, MT 59545



HOME AWAY FROM HOME TO THE WORLD'S GREATEST BEEF BULLS


LEADING THE PRODUCTION TEAM

NICKY KLINGAMAN
NKLINGAMANWWSS@GMAIL.COM

MADDIE MYHRE
MMYHREWWSS@GMAIL.COM

MAC SPICKARD
MAC.WWSS@GMAIL.COM
MOBILE 406-208-8237

OFFICE: 406-628-7510 | EMAIL: RELEASE@WORLDWESTSIRE.COM
25 WINTERPAST LANE, JOLIET, MT 59041

FOLLOW US ON 

The Cattlemen's Choice

Friday Nov. 17, 2023

At the Ranch, Ryegate, MT | Lunch 11:00 a.m. | Sale 1:00 p.m.



Fall Production Sale

Offering: 220 Yearling Angus
& 25 18-month-old bulls
200 Commercial Bred Heifers
Sync'd & AI'd to MRA Advocate

SALE
BROADCASTED ON:



MRA Advocate 9035

Reg: *19572776

BW: +.1 | WW: 67 | YW: 118 | M: 34 | \$B: 113

Sires Include:

Advocate, Flagstone,
Virtue, Wrangler, and Architect

- Volume Discounts
- Free Delivery
- First Season Guarantee
- Free Wintering



Baldrige Flagstone F411

Reg: +*19478642

BW: +3.6 | WW: 71 | YW: 131 | M: 29 | \$B: 164

GREEN MOUNTAIN
ANGUS RANCH
RYEGATE, MONTANA

Green Mountain Angus Ranch

Tim & Kris Todd
35 Green Mountain Drive
Ryegate, MT 59074

406-568-2768 (H) • 406-220-1975 (C)
gmar@midrivers.com

www.GreenMountainAngus.com



COLEMAN ANGUS

YOUR MATERNAL SOURCE

YOUR MATERNAL SOURCE

Larry & Dee Coleman Family • Jeremy & Jenny Haag Family
40067 Morris Road • Charlo, MT 59824

Larry Coleman: 406.240.2751 • Jeremy Haag: 406.833.0117 • Office: 406.644.2697
www.colemanangus.com • colemanangus@blackfoot.net



COLEMAN GLACIER 041 – REG. 19866409

Sire: SAV Renown 3439 Dam: Coleman Donna 439
CED: 6 BW: .5 WW: 77 YW: 131 Milk: 30 \$W: 78 \$M: 85



COLEMAN ROCK 7200 – REG. 19107936

SIRE: OCC Juneau 807J DAM: Coleman Donna 714
CED: 9 BW: -.5 WW: 72 YW: 121 Milk: 25 \$W 71 \$M: 89



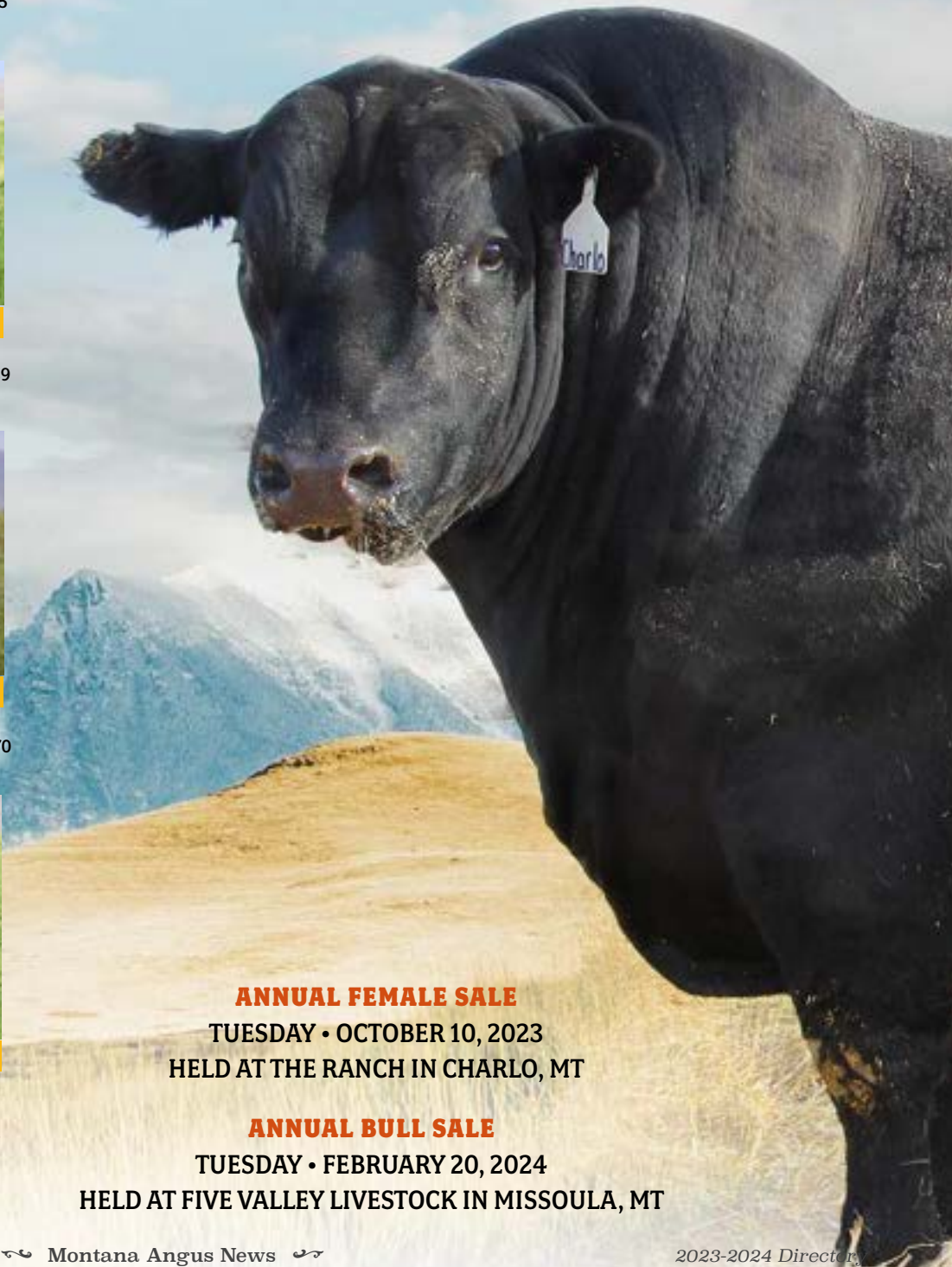
COLEMAN RESOURCE 708 – REG. 18933681

Sire: SAV Resource 1441 Dam: Coleman Donna 376
CED: 8 BW: -.2 WW: 57 YW: 102 Milk: 25 \$W: 58 \$M: 70



SOUTH AMERICA – REG. 19919943

Sire: Don Aparicio Serrucho 57 Maxi
Dam: Rubeta Fontana 7567
CED: 8 BW: .5 WW: 78 YW: 132 Milk: 14 \$W: 61 \$M: 41



ANNUAL FEMALE SALE

TUESDAY • OCTOBER 10, 2023
HELD AT THE RANCH IN CHARLO, MT

ANNUAL BULL SALE

TUESDAY • FEBRUARY 20, 2024
HELD AT FIVE VALLEY LIVESTOCK IN MISSOULA, MT



More Than 1,000 Head Sell!

SITZ *Angus*



58th Annual Fall Bull & Female Sale

December 7, 2023

11:00 AM (MST)

Harrison, MT

450 PAP-Tested 2-Year Old Bulls

375 Home-Raised, SITZ-Bred Heifers

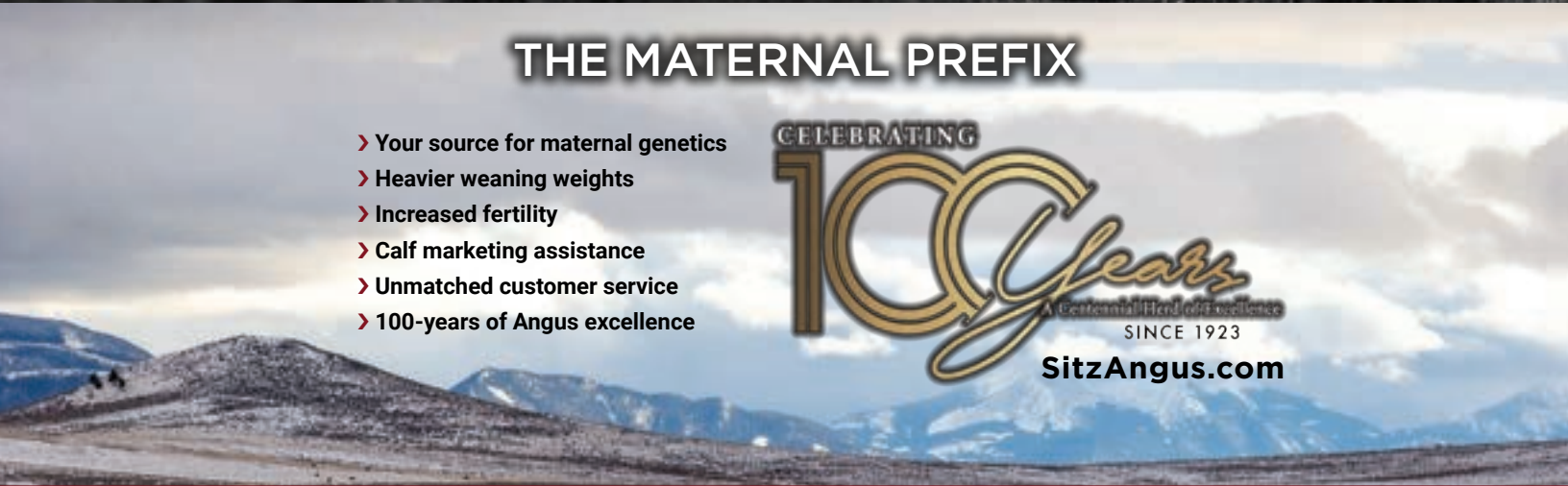
200 SITZ-Bred, Running-Age Cows



THE MATERNAL PREFIX

- > Your source for maternal genetics
- > Heavier weaning weights
- > Increased fertility
- > Calf marketing assistance
- > Unmatched customer service
- > 100-years of Angus excellence

CELEBRATING
100 Years
A Centennial Herd of Excellence
SINCE 1923
SitzAngus.com



Jim Sitz
(406) 683-5277
SitzAngus@gmail.com

Bob Sitz
(406) 581-6448
SitzAngusRanch@gmail.com

Joe Jones
(208) 670-2364
JoeJones@SitzAngus.com

REMINISCE INFLUENCE BRED HEIFER SALE

TUESDAY, NOVEMBER 14, 2023

Reminisce Angus Sale Barn, Dillon, MT

500 head of
Heifers!

- Pelvic measured prior to breeding
- 350 head AI'd to the American out cross standout, **RM McClendon 9599**
- AI'd to start calving February 2nd

RM McCLENDON 9599

is an American outcross, true calving ease standout. He has been Aled to over 2,000 heifers as of 7/04/2022 with no reports of any calving issues. These calves come easy and hit the ground with amazing vigor! He is a double bred calving ease sire that will splash new blood into nearly every herd in America. His Sire Dunlouis Cortachy Boy is a true calving ease, native Aberdeen Angus sire from Scotland. Nowhere in America will you find this pedigree and consistent calving ease. His maternal grand sire RM 2 Trend 3105 has been bred successfully to thousands of heifers in many herds with no difficulty. Both bulls in this pedigree produce calves with a lot of vigor at birth. Both sires are high marbling bulls as well.



AAA #19793942 // DOB: 06/01/2019

1ST CUT, 1 IRON

All heifers cleaned up with Reminisce Angus Cortachy Boy sons. Full Vaccination Program: Preg Guard 10, Vision 8, Virashield VL5, Valbaezon, Cleanup Brucellosis Free, Bangs vaccinated and bled for Brucellosis, BVD PI3 FREE, Preg checked twice
All calves will be eligible for the Reminisce Angus Beef Program.

BRYAN & MARCIA MUSSARD

6101 Sweetwater Rd, Dillon, MT
406-925-1416 • 406-683-6363
bryanmussard406@gmail.com



CHALLIS CREEK CATTLE CO.

Steve Bauchman
PO Box 10, Challis, ID
sbauchman@challisrcrk.com

Vermilion Ranch



TWO PERFORMANCE SALES A YEAR

Fall Performance Sale

SATURDAY, NOVEMBER 25, 2023

Public Auction Yards - Billings, MT

2,000 ANGUS SELL

320 Total Performance Bulls

170 Outstanding Fall Yearlings

The best of our Fall Program! Sired by Ellingson Three Rivers 0065, Vermilion Bomber G017, Sitz Commerce, Vermilion Bomber G077, Sitz Savvy, Baldrige Flagstone, Connealy King Air and Connealy Pryor 0524 & 0544.

150 Big, Stout Coming Two-Year-Olds

Sired by the same outstanding sires!

All bulls are:

- Genomic tested with **ANGUS^{GS}**
Powered by Neogen GeneSeek
- **PAP tested** at +6,000' at over a year of age

75 Select Registered Bred Heifers

100 Head Dispersal All 2016 Born Registered Angus Cows. Bred to Vermilion Riverside, Basin Jameson, S A V Glory, Ellingson Three Rivers, Vermilion Leo and Sitz Savvy

1,500 Fancy Commercial Angus Bred Heifers - bred to Connealy King Air and Vermilion Leo

Connealy King Air



His service and progeny sell in the Fall and Spring.

Spring Performance Sale

MARCH 21-22, 2024

Heifers sell March 21 at South Pryor Development Center

Bulls sell March 22 at Public Auction Yards

5,000 ANGUS SELL

4,500 Fancy Open Commercial Angus Replacement Heifers

500 Total Performance Bulls **ANGUS^{GS}**
Powered by Neogen GeneSeek

Sired by Connealy King Air, Ellingson Badlands, Vermilion Leo, Vermilion Bomber G017, Vermilion Influence, S A V Glory Days, Ellingson Three Rivers 0065, Sitz Savvy.

3rd Annual Online Embryo Sale MARCH 21

6:00 PM at Public Auctions Yards and online with www.northernlivestockvideo.com

FEATURING THE TOP PRODUCING VERMILION COWS AND SOME OF THE BEST SIRES IN THE ANGUS BREED.



All sales broadcasted and videos available online through Northern Livestock Video Auction www.northernlivestockvideo.com



Vermilion Ranch

Pat Goggins Family

Bob Cook - Records & Sales

Cell: 406-670-0078

Jeff Mosher - Vermilion North

Brandon Mosher - Pryor Creek

Jake Kading - Herdsman

Cell: 406-672-5844

Bill Shaules - South Pryor

Will Ecord - Diamond Ring

PO Box 30758

Billings, MT 59107

Email: bcook@cattleplus.com

www.vermilionranch.com

PRIVATE TREATY - 200 Yearling Bulls Spring of 2024

MONTANA 2023-24 DIRECTORY ANGUS

TABLE OF CONTENTS

Message from the Executive Administrator 6
 President's Message. 10
 2023 Montana Angus Tour 26-37
 Breeder's Directory Listings 38-80
News Briefs and Reference
 Advertising Index 86
 Commercial Private Treaty Listings 84
 Event Calendar, September-February 20
 Event Calendar, February-April 21, 23
 Montana Angus Assoc Board of Directors 80
 Montana Regional Associations Listing 84
 Seedstock Private Treaty Listings 82-83

The Montana Angus News is the official publication of the Montana Angus Association and is available to anyone interested in Montana's Angus cattle. However, advertising is restricted to those raising Angus cattle in the state, those consigning Angus bulls to Midland Bull Test or people servicing cattlemen with their business located in Montana.

Since the magazine is not subject to subscriptions, the only feasible way it can be mailed is at bulk rate; therefore, advertising for events scheduled within 18 days of publication will be accepted only at the advertisers risk, and this publication will assume no financial responsibility for distribution on its entire circulation prior to that time.

Finally, the information contained is from sources deemed reliable, but is not guaranteed.

For details on subscriptions and advertising please contact:

Jesse Thompson
 406.450.3429
 PO Box 25 • Whitlash, MT 59545
 montanaangusnews@mtangus.org



Printing:
 Ballyhoo Printing • Lewistown, MT
 www.BallyhooPrinting.com

A big thanks to the Midland Empire Angus Association for providing our cover photo! We look forward to seeing all the cattle on the 2023 Montana Angus Tour!



Greetings! The end of summer brings about fall and with that, all the Montana Angus events that give us a chance to gather as an industry to view great cattle in great country. This year's highly anticipated Montana Angus Tour will be hosted out of Billings, MT by the Midland Empire Angus Association. This Directory is filled with all the information that you need to know. Keep an eye on our social media pages and our website for any other updates. I know they've been hard at it planning this event so I hope you'll join us.



Coming up in October is the NILE and the Angus events that take place during that big event. The NILE Female Angus Sale that will take place on Saturday, October 21 is one you won't want to miss. That sale has a top notch reputation for selling some high end Angus genetics that come straight from most of the producers listed in this magazine. There will be more information available on our website and in the next magazine.

As always, I hope to see you some time this fall at all the events that the Montana Angus Association has to offer.

Happy Trails,

Jesse Thompson
 Montana Angus News



FEMALE SALE

DONORS/PROVEN COWS • HEIFER CALVES
BRED HEIFERS • EMBRYOS
October 12th, 2023
At the Historic Beartooth Ranch



Social 3:00 pm • Sale 4:00 pm
28 Beartooth Ranch Road • Columbus, Montana

Offered by Pine Coulee & Guests • PineCoulee.com • CCI.Live
Jim Stampfel (406) 780-1230 • John Carrel (406) 855-2832

Ballyhoo

PRINTING & DESIGN

How Do You Ballyhoo?

Custom Design
Full Service Printing
Mailing



Bull Sale Catalogs Are Our Specialty. Still.

We've helped sell a lot of bulls in our twenty plus years!



Custom everything.

What are you imagining?

What do you envision?

What do you need?

Your ideas and needs are critical. It's our job to help bring them to life. Providing quality service and support with every aspect of your project is our passion.

- Dedication
- Experience
- Consistency
- Reputation
- Longevity
- Creativity
- Support
- Quality
- Ease
- Service
- Respect
- Knowledge
- Empowerment
- Understanding



Anything on paper and beyond!
books, invoices, invitations . . .
PLUS photo prints and gifts, wall art,
signage, and SO much more!

**It's not producing.
It's creating.**

Create
with us!

BallyhooPrinting.com

406 • 538 • 7988

187 W Frontage Road • Lewistown, MT 59457



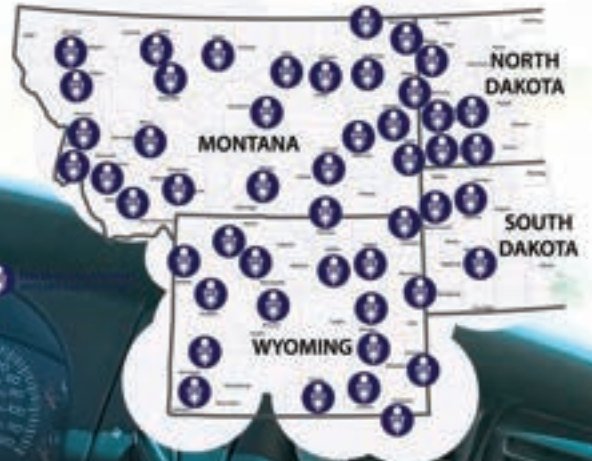
Patty Brittany Kim Gerri Jennifer Sophie

ballyhoo \bal' é-hōō\ *n.* Clamorous and vigorous attempt to win customers or advance any cause; blatant advertising or publicity.

*** Reaching over 71% of
Farmers and Ranchers!**

**Strongest Coverage.
Best Value.
Since 1975.**

 Northern Ag Network
agricultural radio services



**Want to ride shotgun
with your buyers
every day?**

Amelia Siroky

asiroky@northernbroadcasting.com

Call or Text: (406) 671 6974



**NORTHERN
AG
NETWORK**

NorthernAg.NET



* AG MEDIA RESEARCH 2021

Tour time is upon us once again. This year marks 50 years of tours, which is quite an accomplishment. Jim Sitz recently sent me this picture. It really got me thinking about how far the Angus breed, and Montana Angus in particular, has come over the years. There is so much Angus history right here in our state. The tour is a huge part of this history. Over the last half century, the Montana Angus tour has highlighted some of the industries most influential genetics and breeders.

The Montana tour has become the premier state tour in the nation. Angus enthusiasts attend from all over the world to see what Montana has to offer in the way of genetics and ideas. It is a great opportunity to visit with friends old and new, as well as see some amazing country and operations.

Midland Empire always puts on a great tour. There will be lots of great cattle and people to see as well as some of the best hospitality you will find. I really encourage everyone to attend. While on the tour make sure to sit in on the annual meeting of the Montana Angus Association. To continue being a successful organization we need all of the participation we can get. After the meeting we will be holding the annual Montana Angus Banquet. Keep in mind that the priority page auction is held in conjunction with the banquet. It is the main fundraiser for the Montana Angus Association and the only way to get a priority page in next year's directory.

I hope everyone is having a great summer and I hope to see you on the tour.

-Chad Denowh, Montana Angus Association President



Montana came in force. Bob Lund, Russ Denowh, Bob Sitz & Joyce Turner.

WWW.COLECREEKANGUSRANCH.COM
COLE CREEK BLACK CEDAR 46P (#14496765)



GREG GOLDEN
 (406) 962-3743

STACIE HANSEN
 (406) 694-7254

SALE: MARCH 25, 2024

Cole Creek Angus...

Breeding Angus for the Grasslands of America

WHY SETTLE FOR LESS... Buy the Best!

SELLING 550 BULLS!

Text for Your Sale Book! (406) 350-5443

225 TWO YEAR OLD BULLS
Never Been Picked Over
Developed Specifically for These Offerings

325 YEARLING BULLS
Our Most Progressive Genetics,
Trait Leading Sire Groups

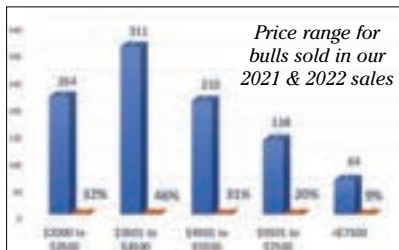
Where Cattlemen Buy Their Bulls . . .

Athletic, Age Advantaged Bulls, Cover More Country and Cover More Cows



Consider this . . .

Shop and compare,
you will search long and hard to find
BETTER BULLS that will sell at a
BETTER VALUE



Whether you're looking for
a couple of bulls or a pot-load,
there are high caliber genetics
in every price range!

FREE
Nationwide Bull Delivery!



TUESDAY
NOVEMBER 28
2023

WEDNESDAY
MARCH 20
2024



STEVENSON ANGUS.com

Hobson • White Sulphur Springs
MONTANA

(406) 423-7500

Home of America's Longest Established Annual Bull Sale

MCDONNELL ANGUS

Beef Country Genetics Sale

One of the largest Efficiency Tested bull sales in North America

NOVEMBER 29, 2023

WEDNESDAY - 1:00 PM
Midland Bull Test, Columbus, MT

170 Fall and Coming Two-Year-Old Bulls
50 Registered Bred Heifers
45 Commercial Bred Heifers

Do the Math!

Efficiency-proven genetics offer up to 20% more savings on the cow herd... and 20% more savings in the feedlot, while still maintaining the same weaning weights.

It doesn't cost you any more than making sure you are using the right bulls and the right program.

MATERNAL Research from Canada, Australia, Texas A&M, University of Florida, Montana State University - Dr. John Patterson, University of Missouri, University of Illinois... have all shown efficiency gains of 10-20% in females tested to be negative RFI or sired by negative RFI bulls with no impact on weaning weight, fertility or yearling weight.

"By stacking generations selected for RFI improvement, greater than 20% in production efficiency can be achieved."

- Dr. Monty Kerley

That's over \$100/head savings in pasture and wintering costs.

STOCKER-GRASS A 20% savings in wintering and pasture costs can easily yield another \$50-\$70/head.

FEEDLOT Improvements in feed conversion have been proven up to 20%. Just a 15% improvement would be over \$130/head savings.

Beef Country Genetics offer...

Quiet Dispositions
Complete Performance
Strong Maternal Emphasis
Structurally Sound
Ultrasounded
Affordable

Free Delivery up to 400 miles
BVD-PI Tested
Breed-Leading Efficiency Sires
Genomic Tested
Wintering arrangements available on bulls

All bulls individually measured for feed intake



20 Sons
Selling!

McD Effective 789

CED+.5 BW+2.0 WW+68 YW+127 MILK+26 MARB+.11 RE+.47
One of our high-efficiency tested bulls in 2018. His sons and daughters have impressive phenotype, and his daughters have great udder and small teats. Top 6% of Vytelle/GrowSafe data base for RFI efficiency, top 20% for combined foot score, top 10% for Marbling, top 10% for \$C.



15 Sons
Selling!

Granger Black Eagle 822

CED+.6 BW+2.6 WW+82 YW+147 MILK+27 MARB+.26 RE+.67
A high-efficiency bull out of the 2019 Midland Test Sale. Good foot with bone and thickness. In the top 1% of the Angus breed for Scrotal and 10% for PAP.



Sale broadcast online at
www.frontierlivesale.com

SALE BOOK AND VIDEOS WWW.MCDONNELLBEEFCOUNTRY.COM

Leo & Sam McDonnell
Leo 406-780-0176 · Sam 406-321-0655

McDonnell Angus

70 Sheep Dip Road
Columbus, MT 59019

ROLLIN' ROCK ANGUS

GENETIC PARTNERS

Fall Female Sale 11.17.23

Annual Production Sale 03.08.24

ROLLINROCKANGUS.COM

ON FACEBOOK & INSTAGRAM @ROLLINROCKANGUS



PEDE
and
Associates
Real Estate



Thank You
MT Angus!

Patti Davis, Broker/Owner Accredited Land Consultant (406) 570-1541

JOIN US FOR OUR

Online Internet Auction

DECEMBER 10TH, 11TH, & 12TH, 2023

Diamond  ngus

*56 Years of Producing
Longevity & Functional
Focused Cattle*

**DIAMONDDANGUS.COM
18106 VALIER HWY
VALIER, MONTANA 59486
406-799-3480**



ARNTZEN ANGUS RANCH

POWER OF PREDICTABILITY

What does 68 years of breeding with the same goal in mind get you?
A consistent, predictable product that has stood the test of time.

Sitz Stellar 726D

Reg. 18397542



CED	BW	WW	Milk	YW	Marb	REA
+4	-0.3	+69	+18	+126	+58	+52

Tehama Tahoe B767

Reg. 17817177



CED	BW	WW	Milk	YW	Marb	REA
+10	+0	+79	+31	+135	+91	+78

OTHER SIRES INCLUDE

GDAR Load Up 7104

Pine Coulee Hannibal H316

AAR Rainier

Woodhill Agenda G451-J043

AAR Justified 8293

KG Justified 3023

Reg. 17707279



CED	BW	WW	Milk	YW	Marb	REA
+12	-2.0	+61	+29	+108	+1.15	+27

Millars Duke 129



Reg. 20236525

CED	BW	WW	Milk	YW	Marb	REA
+12	+0.9	+75	+38	+119	+54	+36



View bulls
and bid online

Brad Arntzen cell: 406.350.4000

Kevin Arntzen cell: 406.350.1612

Derik Arntzen cell: 406.350.1728

577 Arntzen Lane
Hilger, MT 59451

arntzen@mtintouch.net
www.arntzenangus.com

APRIL 4TH, 2024 • 1:00 P.M.

48th Annual Production Sale at the ranch

Selling 210 Bulls & 20 Top End Yearling Heifers

All bulls have genomically enhanced EPDs.

Armstrong Angus Ranch

70 Private Treaty Commercial Bred Heifers

Available starting the end of October

December 13, 2023 online bull sale ends

70 Forage developed 18 month bulls

10 hand picked heifer yearling bulls

Join us at ranch for lunch on the 13 for closing bids

Society says this is obese and unhealthy.

Society says this is ideal.



Cattleman say this is ideal

Cattleman say this is thin, hard keeping low performing.

CHAD & TRISTA ARMSTRONG

Home: 406-287-3212

Cell: 406-224-0586

KYRA ARMSTRONG

cell: 406-565-2750

KLANCY & EMMIE ARMSTRONG

cell: 406-565-0654

"LIKE" OUR PAGE AND FOLLOW US ON FACEBOOK

You are my refuge and my shield: I have put my hope in Your word. Psalm 119:114

KG RANCH

Production Sale

DECEMBER 8, 2023
BLACK ANGUS FRIDAY

At the Ranch
Three Forks, Montana

HA Cowboy Kind 8157



BW	WW	YW	Milk	SW	SB
-1.5	+70	+130	+27	+67	+108

AAA:19274974

KG Justified 3023



BW	WW	YW	Milk	SW	SB
-2.0	+61	+108	+29	+80	+144

AAA:17707279

Sitz Powerball 737E



BW	WW	YW	Milk	SW	SB
+1.5	+76	+133	+43	+82	+148

AAA:18741037

HA Opportunity H695



BW	WW	YW	Milk	SW	SB
+2.8	+87	+139	+25	+79	+170

AAA:19881062

SITZ Verdict 744 H



BW	WW	YW	Milk	SW	SB
+4	+77	+129	+24	+72	+161

AAA:19684244

JCH Logo 0193



BW	WW	YW	Milk	SW	SB
-1.3	+76	+136	+27	+76	+139

AAA:19799915

Selling

250 COMING
2-YR-OLD BULLS

180
COMMERCIAL
BRED HEIFERS

1-888-KG-BULLS



Paul & Kaye Doddridge - Owners 406-285-3660

Cody Jackson - General Manager 406-580-7366

Scott Clarke - Cattle Operations 406-580-7666

Greg Strohecker - Consultant 406-580-3660



RON FRYE | MARKETING

www.RonFryeMarketing.com

Ron Frye: 406-600-7514 Call. Text. Email.
Ronfryemarketing@gmail.com

WWW.KGRANCH.COM

SKINNER RANCH SEEDSTOCK

Commercial Female Sale November 14, 2023



SRS Keynote 1047K

↑ Their service sells! ↓



Bar-E-L Chief 81K



**Balancing traits for decades emphasizing
real-world cattle with essential traits:**



Get in Touch

**Ron & Bev Skinner and Sons Hall, MT 59837
(406) 581-1852 skinnerranch@hotmail.com
www.skinnerranch.com**

SKINNER RANCH SEEDSTOCK



SRS Honest 3136H



Sons out of these sires
sell at our
37th Annual Bull Sale
February 23, 2024



SRS Historic 2208H



Square B Atlantis



good feet and legs, udder quality, tight sheath,
and good disposition

Scan to
view our
herdsires



Or visit us at www.skinnerranch.com

September 2023

- 19 **Montana Angus Association Annual Meeting** • Billings, MT
4pm • Big Horn Resort • (406) 450-3429 • www.MTAngus.org
- 19-21 **Montana Angus Tour** • Host: Midland Angus Association
Billings, MT • (406) 220-1975 • (406) 670-9618
www.MTAngus.org/Montana-Angus-Tour.html

October 2023

- 10 **Coleman Angus Ranch Female Sale** • Charlo, MT • 1pm
(406) 240-2751 • (406) 644-2697 • www.ColemanAngus.com
- 11 **Montana Ranch Female Sale** • BigFork, MT • (406) 210-5605
www.MontanaRanchAngus.com
- 12 **Ladies of the Beartooths Female Sale** • Billings Depot
(406) 855-2832 • www.BeartoothLadies.com
- 21 **NILE Angus Select Female Sale** • Billings, MT
(406) 600-7514 • www.RonFryeMarketing.com
- 21 **A Lasting Legacy Elite Female Sale (Basin Angus)** •
Billings Livestock Commission • Billings, MT • 6pm
(406) 350-0350 • www.BasinAngus.com
- 23 **MT Angus Female Bonanza** • PAYS • Billings, MT

November 2023

- 10 **Arntzen Angus Influence Commercial Female Sale**
Lewistown, MT • 1pm • (406) 350-4000 • (406) 350-1612
(406) 350-1728 • www.ArntzenAngus.com
- 11 **Montana Ranch Bull & Female Sale** • Big Fork, MT
12:30pm • (406) 210-5605 • www.MontanaRanchAngus.com
- 14 **Reminisce Angus Commercial Female Sale** • Dillon, MT
(406) 925-1416 • www.RemAngus.com
- 14 **Skinner Ranch Seedstock Commercial Female Sale**
Ramsay, MT • 1pm • (406) 288-4001 • www.SkinnerRanch.com
- 17 **Rollin' Rock Angus Genetic Partners Fall Female Sale**
Pilot Rock, OR • (541) 969-9409 • www.RollinRockAngus.com
- 17 **Green Mountain Angus Ranch Production Sale** • Ryegate, MT
12:30pm • (406) 568-2768 • www.GreenMountainAngus.com
- 26 **Vermilion Angus Fall Bull & Female Sale** • PAYS • Billings, MT
11am • (406) 670-0078 • www.VermilionAngus.com
- 27 **Stevenson's Diamond Dot Annual Production Sale**
Hobson, MT • 11am • (406) 374-2250 • (406) 366-9023
www.StevensonsDiamondDot.com

- 28 **Stevenson Angus Annual Production Sale** • Hobson, MT
1pm • (406) 350-5443 • www.StevensonAngus.com
- 30 **McDonnell Angus Beef Country Genetics Bull Sale**
Midland Bull Test • Columbus, MT • 1pm • (406) 780-0176
(406) 623-0862 • www.McDonnellBeefCountry.com

December 2023

- 4 **Indreland Angus Bull Sale** • Big Timber, MT/Online • 1pm
(406) 930-0671 • (406) 930-0386 • www.IndrelandRanch.com
- 7 **Sitz Angus Fall Bull & Female Sale** • Harrison, MT • 12pm
(406) 685-3360 • www.SitzAngus.com
- 8 **KG Ranch Annual Production Sale** • Headwaters Livestock
Three Forks, MT • 12:30pm • (406) 285-3660 • www.KGRanch.com
- 9 **Gaugler Angus Annual Production Sale** • Judith Gap, MT
12pm • (406) 690-1546 • www.GauglerAngus.com
- 10-12 **Diamond D Angus Annual Bull Sale** • Valier, MT • 1pm
(800) 932-6487 • www.DiamondDAngus.com
- 12 **Hunt Creek Angus Bull Sale** • Miles City Livestock
Commission • Miles City, MT • 1pm • (406) 425-2006
- 13 **Shipwheel Cattle Co. Annual Bull Sale** • Chinook, MT • 1pm
(406) 357-2492 • www.ShipwheelCattle.com
- 13 **Armstrong Angus Ranch Annual Bull Sale** • Cardwell, MT
1pm • (406) 224-0586 • www.ArmstrongAngusRanch.com
- 15 **Bobcat Angus Annual Production Sale** • Western Livestock
Great Falls, MT • 12:30pm • (406) 788-3272 • (406) 788-3244
www.BobcatAngus.com

January 2024

- 8-9 **Diamond Ring Sale** • Billings, MT
- 25 **Flesch Angus Annual Production Sale** • Shelby, MT • 1pm
(970) 290-4353 • www.FleschAngus.com

February 2024

- 8 **Wittkopp Angus Annual Bull Sale** • Glasgow, MT • 1pm
(406) 974-3552 • (406) 228-9306 • www.WittkoppAngus.com
- 20 **Coleman/Trexler Angus Ranch Bull Sale** • Missoula, MT
Five Valley • 1pm • (406) 363-8818 • (406) 728-3052
(406) 240-2751 • (406) 833-0117 • www.ColemanAngus.com
- 22 **Cattleman's Advantage Bull Sale** • Manhattan, MT
12pm • (406) 580-1606 • www.VDAR.com
- 23 **Skinner Ranch Seedstock Annual Production Sale** • Hall, MT
1pm • (406) 581-1852 • (406) 581-6224 • www.SkinnerRanch.com

- 24 **Never Sweat Ranch Production Sale** • 5 Valleys Livestock
Missoula, MT • 1pm • (406) 370-7623 • www.NeverSweatRanch.com
- 26 **Circle L Angus Bull Sale** • Dillon, MT • 1pm • (406) 683-2002
www.CircleLAngus.com
- 27 **JC Heiken & Sons Angus Annual Production Sale** • Miles City
Livestock • Miles City, MT • 1pm • (406) 855-7839
www.JCHeikenAngusAndSons.com

March 2023

- 1 **Reminiscence Angus Ranch Annual Bull Sale** • Dillon, MT • 1pm
(406) 925-1416 • (406) 683-6363 • www.RemAngus.com
- 2 **3C Cattle Annual Bull Sale** • Stevensville, MT
1pm • (406) 360-1875 • (406) 544-0043 • www.3CCattleLLC.com
- 4 **Clear Creek Angus Bull Sale** • Chinook, MT • 1pm
(406) 399-0403 • (406) 399-5335 • www.ClearCreekAngus.com
- 5 **Apex Angus Value Added Production Sale** • Valier, MT • 1pm
(406) 279-3350 • (406) 279-3548 • www.ApexAngus.com
- 6 **Ox Bow Ranch Annual Bull Sale** • Wolf Creek, MT • 1pm
(406) 235-4281 • www.OxBowRanchAngus.com
- 7 **Split Diamond Ranch Annual Bull Sale** • Dillon Livestock
Auction • Dillon, MT • 1pm • (406) 581-0612 • (406) 498-3005
www.SplitDiamond.com
- 8 **Rollin' Rock Angus Genetic Partners Bull Sale**
Pilot Rock, OR • (541) 969-9409 • www.RollinRockAngus.com
- 9 **45th Annual Duncan Ranch Production Sale** • Joplin, MT
1pm • (406) 399-6300 • www.DuncanRanch.com
- 9 **Thousand Hills Angus Annual Bull Sale** • Headwaters
Livestock • Three Forks, MT • 1pm • (406) 570-1337
(406) 581-2078 • (406) 285-0502 • www.ThousandHillsAngus.com
- 11 **Pine Coulee Angus Annual Bull Sale** • Wagon Box Ranch
Hardin, MT • 12pm • (406) 855-2832 • (406) 780-1230
www.PineCoulee.com
- 12 **Veltkamp Angus Annual Bull Sale** • Manahitan, MT • 1pm
(406) 539-8564 • www.VeltkampAngus.com
- 13 **Sitz Angus Ranch Spring Bull Sale** • Dillon, MT • 12pm
(406) 683-5277 • www.SitzAngus.com
- 15 **Montana Performance Bull Coop w/ Basin Angus**
Midland Bull Test • Columbus, MT • 1pm • (406) 350-0350
www.BasinAngus.com
- 16 **Winding River Angus Private Treaty Opening Day**
Bridger, MT • 12pm • (406) 208-8643 • www.WindingRiverAngus.com
- 16 **Gnerer Angus Bull Sale** • Olive, MT • 1pm • (406) 498-6113
www.GnererAngus.com
- 16 **South Montana Angus Association Bull Sale**
Ramsay, MT • 1pm • (406) 580-6973
- 18 **Whistling Winds Angus Bull Sale** • Hingham, MT • 1pm
(406) 390-1471 • www.WhistlingWindsAngus.com
- 19 **Blevins Angus Ranch Bull Sale** • 5 Valleys Livestock, Missoula, MT
1pm • (406) 728-3052 • www.BlevinsAngusRanch.com
- 19 **Stevenson's Diamond Dot Annual Production Sale**
Hobson, MT • 11am • (406) 374-2250 • (406) 366-9023
www.StevensonsDiamondDot.com
- 20 **Stevenson Angus Spring Production Sale** • Hobson, MT
(406) 350-5443 • www.StevensonAngus.com
- 21-22 **Vermilion Ranch Angus Spring Production Sale** • PAYS
Billings, MT • 11am • (406) 670-0078 • www.VermilionAngus.com
- 23 **Lund's B Bar Angus Annual Bull Sale** • Bull Palace • Baker, MT
1pm • (406) 978-3634 • www.LundsBBarAngus.com
- 25 **Harrer's Lost Lake Ranch "In the Real World" Sale**
Western Livestock • Great Falls, MT • 1pm
www.HarrersLostLakeRanch.com
- 25 **Larsen Ranch Angus 50th Annual Bull Sale** • Forsyth, MT
1pm • (406) 351-1412 • (406) 351-9828 • www.LarsenRanch.com
- 25 **Cole Creek Angus Ranch Annual Bull Sale** • Midland Bull
Test • Columbus, MT • 1pm • (406) 839-7588 • (406) 962-3743
www.ColeCreekAngusRanch.com
- 26 **Bar JV Angus Bull Sale** • Fairview, MT • 1pm • (406) 480-5676
(406) 798-3398 • (406) 798-3653 • www.BarJVAngus.com
- 26 **Rocking L Genetics & Snowy Mountain Angus Sale**
Lewistown Livestock • Lewistown, MT • 1pm
(406) 350-1059 • (406) 951-0212 • (406) 366-0292
- 27 **Peterson Grain & Cattle Bull Sale** • Havre, MT • 1pm
(406) 480-5676 • (406) 798-3398 • (406) 798-3653
www.PetersonGrainAndCattle.com
- 28 **Gartner-Denowh Angus Ranch Annual Bull Sale**
Sidney, MT • 1pm • (406) 798-3355 • (406) 798-3541
www.GDAR-Angus.com
- 28 **Cactus Cattle Company Bull Sale** • Belle Fourche, SD
1pm • (406) 891-5811 • (406) 971-5811 • www.CactusCattleCo.com
- 30 **Nueta Cattle Co Bull Sale** • Busby, MT
12pm • (406) 679-0013



**WE ALL SORT
FOR POUNDS!**

*37th Annual
Bull Sale*

POUNDS PER SQUARE INCH

**Selling
200 Registered Angus Bulls**

Tuesday

April 3, 2024

1:00 pm MDT

At the Ranch 10 miles east of Malta, MT



HA-PSI-K031
20501041

*We raise 'em for pounds,
because you sell them by the pound.*

**Exciting
New Sire Groups!**

- HA Scale Boss H677
- HA Cowboy Kind 8167
- Sitz Resilient 10208
- LAR Man In Black 075
- HA Cowboy Up 9063
- Hoffman Thedford
- AAR Rainer 0064
- SAV America 8108
- Hoffman High Road
- Sitz Incentive 704H
- SAV Bloodline 9578
- Timberline Prime Cut 339

**Females For Sale
Private Treaty this Fall**



We do one thing . . . Angus!

Billy & Heidi Lulloff
Billy's cell 406-654-4669

Dave & Yvonne Hinman
406-654-1809

Tyler & Sascha Lulloff
Tyler's cell 406-654-4609

Dave's cell 406-654-4656

HinmanAngus@hotmail.com

PO Box 220 • Malta, MT 59538

Contact us for
your Sale Book!

HinmanAngus.com

Bulls that will keep you in the Cow Business!

April 2023

- 1 **Fitzsimmons Baltrusch Angus Production Sale** • Havre, MT
1pm • (406) 570-8646 • www.FBARanch.com
- 2 **Hinman Angus Annual Bull Sale** • Malta, MT • 1pm
(406) 654-1809 • www.HinmanAngus.com
- 3 **Nissen Angus Annual Production Sale** • Chinook, MT • 1pm
(406) 949-1101 • (406) 262-4125 • www.NissenAngus.com
- 4 **Arntzen Angus Ranch Production Sale** • Hilger, MT • 1pm
(406) 462-5557 • www.ArnizenAngus.com
- 5 **Midland Bull Test Angus Day** • Midland Bull Test • Columbus, MT
11am • (406) 322-9911 • (406) 322-5597
www.MidlandBullTest.com
- 8 **C Spear Angus Annual Bull Sale** • Billings, MT • 1pm
(406) 670-0689 • (406) 670-6311
- 9 **Hilltop Angus Ranch** • Denton, MT • 1pm • (406) 366-3461
www.HilltopAngus.com
- 10 **Pass Creek Angus Bull Sale** • Wyola, MT • 1pm
(406) 343-2551 • www.PassCreekAngus.com
- 12 **Regency Acres Bull Sale** • Sidney, MT • 1pm • (406) 480-5988
www.RegencyAcres.com
- 13 **Math Farms Angus Bull Sale** • Glasgow, MT • 1pm
(406) 674-5562 • www.MathFarms.com
- 16 **Treasure Test Bull Sale** • Western Livestock • Great Falls, MT
1pm • (406) 788-9869 • www.TreasureBullTest.com
- 19 **Timber Line Ranch "Bred for Business" Bull Sale**
Manhattan, MT • 1pm • (406) 581-4764
www.TimberLineAngus.com
- 19 **DeGrand Angus Bull Sale** • Baker, MT • 1pm
(406) 775-8861 • www.DeGrandAngus.com
- 25 **North Bench Livestock Bull Sale** • Glasgow, MT • 1pm
(406) 724-3322 • (406) 853-5130 • www.NorthBenchLivestock.com
- 26 **Medicine Rocks Annual Bull Sale** • Bowman, ND • 1pm
(877) 211-0600 • www.MedicineRocksRanch.com
- 26 **Miske Ranch Angus Bull Sale** • Glendale, MT • 1pm
(701) 218-0441 • (406) 377-2697

MONTANA ANGUS NEWS ADVERTISING RATES AND DEADLINES

Ad Size	Full Color Rate	Ad Dimensions (w x h)	Publication Specs
Full Page	\$650	8.5" x 11" *See specs. for details	Trim Size 8.5" x 11"
2/3 Page	\$550	7.5" x 6.25"	Bleed 8.75" x 11.25"
1/2 Page Vert	\$475	7.25" x 4.9167"	Live Area 7.5" x 10"
1/2 Page Horiz	\$450	7.5" x 4.75"	Four Color Process (CMYK)
1/3 Page Horiz	\$300	7.5" x 3.125"	PDF format (press quality)
1/3 Page Vert	\$300	2.34" x 10"	CMYK, all fonts embedded
1/4 Page	\$250	3.625" x 4.5"	
Business Card (B&W)	\$75	4.75" x 2"	

Deadlines:

September/October 2023: Deadline Aug 21 • Distributed mid-Sept

November/December 2023: Deadline Oct 11 • Distributed 1st of Nov

January/February 2024: Deadline Jan 5 • Distributed mid-Jan

March/April 2024: Deadline Feb 12 • Distributed 1st of Mar

Breeder's Directory 2024-2025: Deadline July 1 • Distributed August

TO RESERVE YOUR SPACE, CONTACT:

Jesse Thompson • montanaangusnews@mtangus.org • (406) 450-3429 • PO Box 25, Whitlash, MT 59545

FOCUSED ON THE FEMALE



MILLARS DUKE 816 AAA 19343216



S WRANGLER 830 AAA 19198304



GDAR JUSTIFIED 914 AAA 19464109



PARTISOVER DEEP ROOTS AAA 20004765



U-2 COALITION 206C AAA 18626847



LD CAPITALIST 316 AAA 17666102



**SIRES DESIGNED TO KEEP YOU
IN THE COW BUSINESS!**



BEEF-360

www.BEEF-360.com

KEENAN SWITZER 660-734-0510
JERRY TERRILL 214-726-2759

FOR BEEF-360 GENETICS, CONTACT US OR ANY OF OUR INDEPENDENT REPS OR DISTRIBUTORS.

M A R

Pacifico 260

AAA 20572405 • 1/13/2022



**STANDOUT
PHENOTYPE**
with
**HERD BULL
PRESENCE**

Kate Roberts

CEU	BW	WW	YW	MLK	MRB	RE	SM	SW	SB	SC
11	1.5	72	131	17	1.26	0.62	70	60	189	315
15%	60%	20%	20%	95%	5%	50%	30%	40%	5%	3%

Pacifico is a moderate bull with great feet and an outstanding calving ease prospect with adequate growth. He has the look to make tremendous females that will last for years to come.

Hoover No Doubt
Sterling Pacific 904
Baldrige Isabel B082



Baldrige Alternative E125
M A R Miss Amy 9012
M A R Miss Amy 1743

His mother is a Baldrige Alternative daughter with a beautiful udder and great feet - the kind that will breed back early, raise an exceptional calf and become a fixture in the herd. Her bull calves to date have averaged over \$15,000.



YOUR ONE STOP SEMEN SHOP.

UNIVERSAL SEMEN SALES

7 Tourmaline Lane • Great Falls, Montana 59404 • 406-453-0374 • 1-800-227-8774
chaseuniversalsemen@gmail.com • certsuniversalsemensales@gmail.com

Montana

◆ 2023 ANGUS TOUR ◆

SEPTEMBER 19TH-21ST

SPONSORED BY MIDLAND EMPIRE ANGUS ASSOCIATION

50 years
Montana
ANGUS TOURS

Tour Cost

\$150/PERSON

Golf Cost

\$75/PERSON

HOST HOTEL

BIG HORN RESORT

1801 MAJESTIC LN
BILLINGS MT 59102
406-839-9300

OTHER HOTELS

HOLIDAY INN

3431 EMBER LANE
BILLINGS MT 59102
406-652-0111

HAMPTON INN

3550 EMBER LANE
BILLINGS MT 59102
406-656-7511

Schedule of Events

TUESDAY SEPT. 19TH

8 AM GOLF SCRAMBLE AT EAGLE ROCK

OPEN HOUSES ALL DAY

PEAK GENETICS / GENEX

ORIGEN

4 PM MT ANNUAL MEMBERSHIP MEETING

5 PM SOCIAL & BANQUET AT BIG HORN RESORT

WEDNESDAY SEPT. 20TH

PINE COULEE AT BEARTOOTH RANCH

GUESTS: BARRAGREE CATTLE CO

CRAFT ANGUS

JL FARMS

INDRELAND ANGUS

GREEN MOUNTAIN ANGUS

CURRENT CREEK

FROSTY CREEK ANGUS

GUESTS: WEST WIND ANGUS RANCH

A BAR ANGUS

VERMILION RANCH

THURSDAY SEPT. 21ST

BEARTOOTH ANGUS

GUESTS: GREEN ANGUS

HEIKEN ANGUS

WORLD WEST SIRE SERVICES

MIDLAND BULL TEST

GUESTS: WINDING RIVER ANGUS

MCDONNELL ANGUS

HUNT CREEK ANGUS

BASIN ANGUS

Register Online:



SCAN THIS CODE WITH
ANY SMART PHONE
CAMERA OR REGISTER
ONLINE AT MTANGUS.ORG

More information at **MTANGUS.ORG**

Montana

◆ 2023 ANGUS TOUR ◆

SEPTEMBER 19TH-21ST

SPONSORED BY MIDLAND EMPIRE ANGUS ASSOCIATION

TUESDAY, SEPTEMBER 19



PEAK GENETICS/GENEX HAWKEYE WEST

3800 Duck Creek Rd., Billings, MT 59101
(406) 656-9034

The Billings PEAK Production Site is the housing and collection facility for the premier beef bulls of Alta Genetics and GENEX. PEAK is a part of the URUS holding company. The companies that compose URUS include: AgSource, Alta Genetics, GENEX, Jetstream Genetics, PEAK, SCCL, Trans Ova Genetics and VAS. PEAK works diligently to ensure that every unit produced is of the highest quality. PEAK produces the largest amount of bovine semen in the world, in combination of all the production sites.

In 1996 GENEX purchased the current location from Hawkeye Breeders in Adel, IA. Following the purchase of the facility there were additional barns and an office built. Over the past couple of years there has been numerous improvements made to enhance bull comfort and improve efficiencies. Throughout the history of the facility there have been many of the best bulls in the Angus breed housed here. We are a CSS facility which gives us the ability to export semen to multiple countries across the world.

The mission statement for PEAK is: "To develop sustainable cattle for global clients using exceptional animal care and innovative technologies to provide superior genetics and high fertility semen."

ORIGen

Dick Beck

10 West Arrow Creek Road,
Huntley, MT 59037
(866) 867- 4436
info@ORIGen-beef.co
www.ORIGenBeef.org

In January 2001, a group of cattlemen began a monthly meeting to explore how to form a business for beef cattlemen that was owned and operated by beef cattlemen and the concept of Breeder to Breeder Genetic Services was founded and a partnership with ABS Global was established to allow ORIGen to begin the collection process on new and young sires purchased or leased by ABS. A parallel agreement allows the marketing staff of ABS to sell CSS semen from ORIGen marketing sires and that partnership has led to the Number 1 sire



of progeny registered by the American Angus Association for four of the past six fiscal years of the American Angus Association.

After initially purchasing the business of Art Roberts, ORIGen built and moved into its current location on Arrow Creek Road at Exit 469 of Interstate 90 East of Billings in 2004. Bio-security has always been a high priority at ORIGen which has led it to having four distinct health areas to assure that no more than one-fourth of the facility could be subject to a USDA or Montana Department of Agriculture Quarantine at any one time. With a total capacity in excess of 150 bulls, ORIGen can produce CSS and export semen from our Lewis, Clark and Yellowstone residence barns and custom collect small quantities from young sires from the Receiving and Isolation barns.

Three years ago, ORIGen entered into a cooperative agreement with ST Genetics to operate a semen sorting laboratory within the ORIGen headquarters building. Over the past several years there has been semen sorted for purebred breeders of numerous breeds, other collection facilities in the Northwest United States and progressive commercial cattlemen working to adapt the success of sorted semen in the dairy industry model where replacement heifers are created using elite sorted female product with the balance of a dairy production herd being bred to male sorted product from beef bulls to maximize performance and value of the resulting progeny. ORIGen customers have experienced outstanding results with sorted products from our lab in conventional breeding, embryo transfer and IVF work. ORIGen is pleased to now be able to provide fresh sorted semen for use in timed synchronization projects where fresh semen be used on the exact same breeding schedule as conventional frozen semen.

WEDNESDAY, SEPTEMBER 20

PINE COULEE ANGUS

Jim Stampfel

PO Box 772, Absarokee, MT 59001
(406) 780-1230
pinecoulee@outlook.com
www.PineCoulee.com



Welcome to Pine Coulee Angus! We are excited to have each of you here and are humbled by the opportunity to showcase our program yet again to our fellow seedstock and

commercial producers from across the country.

All of the cattle from our upcoming annual Ladies of the Beartooths Sale will be available to view at the Historic Beartooth Ranch, where most of these animals pasture during the summers. In addition, several of our top donors and foundation females, and a selection of bull calves and herd sires will be shown. Many of our genetic lines still have roots in the old Beartooth Ranch cattle—they are tried and true, and have served as a solid program base. The Stampfel family will be available throughout the tour to talk about our operation and to answer questions about our cattle, genetics, and sales.

We have found over the years that keeping a strong focus on the maternal side of things ultimately leads to a more balanced, functional, and predictable herd. Good feet, udders, and longevity are traits that we not only care about (as most do), but ones we cull

heavily on. While there is a time and place for feedlotting cattle, we maintain a non-terminal approach, and have sought to develop working cows and cow lines that are durable and feed-efficient in any situation. Cows that are hearty enough to excel in rough, dry country as well as the mountainous Montana winters are the ones that get to stick around, and after years of breeding that way, there are few outliers. Phenotype, as well as numbers, are very important to us and our female sale offering this year exemplifies that.

The Stampfel family is proud of the cattle we raise, and we are enthusiastic about the direction our program continues to move. Please reach out with any questions about our cows during this tour, or afterward by visiting our websites: pinecoulee.com, beartoothladies.com, or social media at "Pine Coulee Angus". We hope to see you on October 12th at the Beartooth Ranch for the 7th annual Ladies of the Beartooths female sale—social at 3pm, and sale at 4pm—and at our bull sale every March!



BARRAGREE CATTLE Co.

Brian & Zane Barragree
 Box 562, Absarokee, MT 59001
 (406) 780-1219;
barragreecattleco@hotmail.com
 (406) 425-1720
zbarragree@outlook.com

Barragree Cattle Company is a seedstock Angus operation in the Beartooth Mountain Region of Montana. Brian began buying the cows that would become the foundation for his operation during

his time at the iconic Beartooth Ranch. He has sourced few females elsewhere and put a focus on functional, productive, and maternal cattle.

BCC is built on the backs of Angus females that blend phenotypic quality with honest production. Their cattle work in a wide array of environments, but are raised in a typically dry and rocky setting and are asked to thrive there. The approximate 10 sections of rough country the cows call home is less than forgiving both in summer and winter months and the cows must have exceptional foot quality, ease of flesh, superior fertility, and great udders to make it there.

The goal of BCC is to meet or exceed the needs of their commercial bull buyers as well as fellow seedstock producers in need of females that work. Annually, the third Friday in March, BCC markets their bulls in the Montana Performance Bull Co-op, a sale Brian began in 2008. Although the sale has grown, Barragrees have stayed true to what their loyal customer base needs. Currently, their females, both heifer calves and cows, are sold private treaty as well as through the NILE Angus Female and the Ladies of the Beartooth sales, both held in October. The handful of show heifers they sell every year are a true highlight for Zane. He spends time mentoring and building relationships with customers nationwide. BCC cattle have seen success at every level in the recent past.

Barragree cattle company is truly a family owned and operated business. Brian runs the operation with his son Zane, future daughter-in-law Sam, grandson Brooks and daughter Olivia. The three generations put a lot of heart into Barragree Cattle Company and care deeply about the impact it has on the industry around them. We welcome you to south-central Montana and are happy to answer any questions that you may have about our operation.



LES CRAFT ANGUS RANCH

Les & Dawn Craft
 981 Shane Creek Road
 Columbus, Mt 59019
 (406)322-6158

Dawn and I are honored to participate in the 2023 Montana Angus tour, and we look forward to sharing our program with you. We run 120 Registered Angus cows on our ranch located 13 miles Southeast of Columbus on Shane Ridge.

My passion for Angus cattle began 60 years ago in 1963 when my father purchased a group of registered heifers for our livestock and grain farm in Northwest Indiana.

I graduated from Purdue University with an Animal Science degree in 1974. After college I worked as a feeder and fat cattle buyer for 7 years, then transitioned to a multi-line insurance agent for the next 37 years until my retirement in 2019. We maintained a herd of 60-70 Angus cows on our 300 acres in Northern Indiana raising corn, soybeans, hay and Angus Cattle. Dawn and I purchased our ranch near Columbus in 2009 and moved our entire operation here in 2019.

Our primary focus is the ongoing task of creating a herd of what we believe will be the ideal Angus cow for our South-Central Montana environment. We demand stout, efficient females that have sound feet and legs, good udders and the ability to wean a heavy calf. We're firm believers in EPD's and DNA testing to help develop cows with high heifer pregnancy accuracy, balancing milk production and fertility with much attention given to the maternal weaned calf value index (\$M).

We require that our cattle be gentle and easy to work with as Dawn and I do most all the cattle work by ourselves. We get frequent positive comments from customers on the calm dispositions that our cattle have.

We're firm believers in phenotype because we know our bull customers want to raise feeder cattle that have "eye appeal" as well as top growth and performance.

In the last 2 years we've had good results in our calf crops with sires such as Baldrige Versatile, Basin Deposit, Baldrige Alternative, Sitz Barricade, Sitz Stellar and Deer Valley Growth Fund.

We have marketed bulls at Midland Bull Test for the last 30 years with positive results. In 2019 we had the highest weight-per-day-of-age bull. In 2020 we had the 2nd highest selling bull and in 2023 we had the high get-of-sire in group 1 with Baldrige Versatile sons. We also sell about 15 bulls by private treaty and groups of females privately at the ranch.

JL FARMS- THE WAGNER GIRLS

Darryl & Kari, Jena & Jordyn Wagner

3752 Little Creek Lane, RR9, Billings, MT 59101

Darryl: (406)-698-3534 Kari (406)-670-9619

Jena (406)-670-9618 jenalee.wagner@gmail.com

Jordyn (406)-672-5553 jordynlynnwagner@gmail.com

Darryl and Kari Wagner established JL Farms in 1993 for their two daughters, Jena Lee and Jordyn Lynn. Initially, the ranch primarily focused on commercial cattle while the girls were younger. However, in 2004, Darryl and Kari decided to establish a registered herd purchasing the initial females from Green Angus, Mydland Angus, and Barragree Cattle Company among other producers. The focus was on acquiring foundation females with femininity, balance, and function. Since 2004, JL Farms herd has expanded to 100 purebred cow-calf pairs and is currently managed on 400 acres of irrigated land.



Darryl and Kari recently retired from their previous careers as a teacher and welder, respectively. Jena, the oldest daughter, currently serves as the Blueprint Mineral Brand Manager. Meanwhile, Jordyn is a former teacher and is primarily working on the ranch until her and her husband, Ty Shockley,

relocate to Denver where Ty will work at the law firm of Gibson Dunn & Crutcher. Jena and Jordyn also operate an agricultural marketing business—JL Marketing & Photography. Despite their busy schedules, the family actively operates the ranch together, reflecting its status as a true family venture.

Both Jena and Jordyn have served on the National Junior Angus Board of Directors, allowing them to expand their network within the Angus Breed community. The Angus Association has provided numerous opportunities for their family. One of Jena and Jordyn's favorite parts is getting to work with the juniors in the association whether it be with their show heifers or in other aspects of the breed.

At JL Farms, our herd is primarily based on maternal genetics that excel both in the pasture and at regional and national levels in terms of phenotype. The females are mainly marketed through the N.I.L.E Angus Female Sale, Wyoming Angus Female Sale, and private treaty. JLF Bulls are sold at the Midland Bull Test and through a select number of private treaty arrangements. As a family, we take pleasure in the production side of the operation, making breeding choices that result in functional females suitable for the pasture or the show ring that possess eye-appeal, are soft-ribbed, maternal in their kind and are in consistent performance in raising quality calves.

During your visit to the Midland Empire Montana Angus Tour, the Wagner family hopes you have an enjoyable experience and welcomes the opportunity to discuss their operation with you.



INDRELAND RANCH

Roger and Betsy Indreland

170 Glasston Road

Big Timber, MT 59011

Home: (406) 932-4232

Roger: (406) 930-0386

Betsy: (406) 930-0671

iaranch@itstriangle.com

www.IndrelandRanch.com

Hello Folks and Welcome!

Indreland Angus originated in 1977, after a short while of following the mainstream philosophy of high production per animal at all costs, it became apparent to us that a paradigm shift was in order. Now we focus on production per acre. In 2011, 21 acres were required for us to run an animal unit. Last year, 14 acres were required for an animal unit. This has been accomplished by working with natural systems and focusing on our soil health which in turn has increased forage production.

Our Mission: To provide genetics and services that help cattle producers attain more freedom and profitability in their business and life.

Our Vision: Indreland Ranch is holistically and regeneratively managed and operated to produce healthy nutrition and environment for people, livestock and wildlife. This is accomplished by resilience to economic and environmental factors and by providing opportunities and profit to all involved. It is managed and operated by a team of motivated, goal oriented and open minded individuals that work together in a respectful manner.

Our production cycle: The cowherd calves in May/June, wean in late January/early February. Our heifers and cows calve in one bunch on pasture with no night checks. We sell about 90 18 month old forage developed bulls in our annual online/onsite sale held in early December. This year, we also plan to sell 100 bred females at our sale.

Our cowherd is primarily the result of using in-herd genetics that have adapted to our forage based, low input management and our environment. You will likely not see another herd that has been developed to this degree in this manner. Most winters, our cowherd is able to graze stockpiled forage with supplemental protein. Last winter, we fed approximately 200 lbs. of hay per cow. We look forward to visiting with you on the tour!!

GREEN MOUNTAIN ANGUS RANCH

Tim & Kris Todd

35 Green Mountain Dr., Ryegate, MT 59074

(406) 568-2768 - (406) 220-1975

gmar@midrivers.com - www.GreenMountainAngus.com

Green Mountain Angus Ranch was started in the early 70's by the Todd family. The original herd was established with the purchase of 2 groups of cows - one group from Sir Williams Angus out of New York State and the other from a herd out of Canada. The original location of the ranch was in the Black Hills of South Dakota near the town of Spearfish and just under the base of Green Mountain, thus the name. The first production bull sale was held at the local Sale Barn in 1973.

In 1981 the Green Mountain Angus Ranch moved to Montana



and expanded the herd to 250 cows. Production sales were held in the spring and offered around 100 bulls.

In 1991 Tim & Kris took over the day to day management of the operation. The spring bull sale was moved to the 3rd Friday in November

and grew to 240 bulls and 200 commercial bred heifers. 200 registered bred heifers are offered annually thru private treaty. We also market 150 bulls thru a private treaty sale starting February 1st.

Green Mountain Angus Ranch has grown to one of the largest Seed Stock Ranches in North America and is listed in the top 20 herds for registrations through the American Angus Association. The cow herd has grown to over 1300 cows that are based on 3 main Ranches in Central Montana and another ranch north of Rapid City South Dakota.

The cows are calved out in the spring and are AI bred to start calving in the first of February. Cows are synchronized in batches of 200 to 250 and are bred up in the same order they calve. Sires used for the 2022 calf crop include: Baldrige Flagstone F411, MAR Advocate 9035, S Wrangler 830, S Architect 9501, Sitz Virtue 11710 and Sitz Stellar 726D.

The ET program consists of 50 to 100 embryos per year. Donor Cows include: THM Lady Innovation 3189-680 (18900743) and GMAR Spur G606 (19591046). The newest addition to the donor pen is CAV Lady Payweight 5608-7560 also known as the mother to Trail Boss. Green Mountain Angus Ranch markets some of their best female genetics in the Ladies of the Beartooth Sale. This sale is known to have some of Montana's top females and best genetics in the state. This year's sale date is October 12th.

If you have any interest in any part of our program or are in Montana, please give us a call. We would like to visit and show you our program.

CURRENT CREEK ANGUS RANCH

PO Box 389, Roundup MT 59072

Gary: (406) 320-1142 - Tyler: (406) 320-1415

Phyllis: (406) 320-0097 Office: (406)323-2227

Email: ccar@midrivers.com

Currant Creek Angus, the Gary & Phyllis Eliasson family, welcomes everyone to the 2023 Montana Angus Tour. Headquartered west of Roundup, Montana in the Musselshell Valley, the Eliasson family has been in the cattle business there for 3 generations. Gary purchased his first registered Angus heifers at the first NILE Angus Sale.

Gary and Phyllis have three children. Reba and her husband, Charlie Ahlgren, ranch northeast of Winnett, MT with their 3 children, Shaylie, Cami, and Brody. Jessica and her husband, Cody Samuelson live near Roundup with their children, Sidney & Whitney, and own Key Insurance as well as running some registered Angus cows north of Roundup. Tyler and his wife,



Rebecca live north of Roundup and are an integral part of the operation. They run registered Angus cattle, as well as custom haying and trucking.

We strive to produce cattle that will excel in any environment, breeding for balanced traits, longevity, and disposition. Due to limited labor availability, we have transitioned our fall calving herd to calve in the spring as well as moved the spring calving season to begin in late March, allowing us to produce those calves with fewer inputs and less labor. The youngest calves will be held over to offer as 2-year olds each year.

There are 2 production sales each year with approximately 100 bulls offered in each sale. Sales are held the first Saturday in December at the ranch in Roundup and the fourth Tuesday in April in Miles City, MT at Miles City Livestock. Bulls are also available by private treaty at the ranch each year.



FROSTY CREEK ANGUS RANCH

Terry Frost

357 Rehder Road

Roundup, MT 59072

(406) 323-3415

frostangus@midrivers.com

www.FrostyCreekAngus.com

The 1980's seem so long ago, that is when the Frost family began working Registered Black Angus on the ranch. In the years since then, we have grown in cattle numbers as well as family member numbers! We are proud to say our two sons have added spouses, along with terrific grandkids, who also added brides and gifted us with two great-grandchildren.

We moved from the Bitterroot Valley to Roundup in 1999, after retiring from daytime jobs and flashlight ranching! We continue chasing the dream of more acres and more cattle to handle. Daytime hours are filled with ranch endeavors and challenges. We have survived three fires at the ranch and remain determined to achieve what we came for. The last fire, the Bobcat Fire, was the biggest challenge as it took everything we needed to succeed with ranch work on a daily basis. We still have no barn, tack room, or lean-tos but the corrals are up with head catches and alleys. Our fences have been mostly replaced and we continue to have logging progress occurring to assist with the pastures and forested areas from downfall as well as all the blackened trees. This is evident as you see our place and are sure to notice changes. Frosty Creek Angus cattle have proven themselves over and over by sustaining through all the hard

times. There are great mother cows who look after their young and raise quality genetics through all the storms that have been handed them. Part of the changes taken were to switch to a fall calving program. This allowed better use of our grazing land areas as well as hardship on the help! The cattle continue to prove their line of genetics are easy on feed, we do test for feed efficiency and sell our 18 month old bulls in November. We are proud to have you visit and see proven, proficient cattle.

It is an honor to have joining the ranch stop, Duane and Julie Wacker as well as Stacy and Michelle Gravenhof. We feel privileged to introduce you to them and share their cattle.

We look forward to your arrival. We are honored to have you meet the family we cherish, and pleased for the chance to offer viewing of great cattle.



WEST WIND ANGUS RANCH

Stacey and Michelle Gravenhof
402 Johnson Road, Roundup, MT 59072
(507) 360-7969 • (507) 360-4733
www.westwindangusranch.com

Stacey and Michelle Gravenhof have been married for almost 30 years and have been blessed with 3 wonderful children. Paige married to Ethan Haugen in Arlington, SD their daughter Harper and expecting a new addition at four time! Cody, newly married to Madison residing in Roundup MT, and our youngest Tyeson just graduated and is headed to NEO in Miami, Oklahoma for Livestock Judging and Animal Science. Michelle works as the Assistant Vice President at 1st Security Bank in Roundup.

West Wind Angus Ranch of Roundup Montana was established in 2016 when Stacey and Michelle Gravenhof moved their cattle operation from Southwest Minnesota to Montana. Although the WWAR prefix was new, the pedigree's run deep with the GF prefix for Gravenhof Farms. Those original cows trace back to 1992 when Stacey Graduated from college and purchased his first group of Registered Angus heifers to AI and build from. We started selling Angus bulls about 1996, and finished the remaining cattle ourselves for private sales though a local locker, and the balance to CAB programs.

We have learned to stay diversified with 80 head of Boer Goats raised for breeding and show. We have also raised high end working Australian Shepherds for 25 years.

With the roller coaster ride of the last few years the business decisions made in hard times can carry a lot of the weight of the future, even though in the moment you feel paralyzed, it becomes so important to look at all the options. Like sending your cows away to feed, instead of bringing the feed to the cows.

We have intensively AI'ed our herd from the start, and use ET as much as we can. We view every mating as an opportunity to genetically improve, so cows are individually mated to the bulls being used in AI based on pedigree, EPD's, and phenotype. Moderate, functional cows with exceptional dispositions is the target. When you make the cows you like, the bulls come easy!

This year, 2023, we were blessed with the opportunity of a new lease nearby. We decided to do some ET work on a larger scale for customers. We look forward to the opportunities this will bring in the future!

We sell our bulls and a few heifers private treaty, in the spring, at this time. Feel free to look us up, we love to talk cattle!



A BAR ANGUS

Duane & Julie Wacker Family
1100 Alec Roy Rd.
Roundup, MT 59072
(406) 861-7459
wackerdj@midrivers.com

A Bar Angus is operated by Duane and Julie Wacker and our family. We have a son Sid and daughter Jenna who are grown and on their own but still have cattle here and help out. Our operation is

located north of Roundup, MT where we run our cattle on the ground that was homesteaded by our family in 1913. As many homesteaded operations have been dispersed over the years, our goal is to keep the land we call home in the family. Thanks to our parents and ancestors for providing us the chance to go on with the operation.

Our genetics show a conservative approach to raising cattle for the current times. We strive to make sure the mother cow is at the center of the operation. Mother Nature is always in control and has proven to us that we need genetics that do not require big input costs and still maintain a consistent calf crop. The last few dry years have put our cattle to the test and they have managed to produce a great calf and breed back on time for the next year. We are very thankful for the great start to 2023 and hope the moisture continues.

Pedigrees with proven, foundation bloodlines are the mainstay of our genetics. We don't concentrate on high number epd's but make sure our cattle have enough growth to make it in the commercial cattleman's operation. Fertility, structure, maternal function and a good disposition are required to stay in production here.

The cattle we have on display represent great foundation genetics along with a newer sire to us LD Capitalist 316 (AAA 17666102). Although he turned ten years old this year, he is still seeing a lot of use by breeders around the country. His progeny look great so far and it looks like he will be a great addition to our current line-up of sires. Rockin Horse Tailor Made 456 (AAA 14899673) and Cole Creek Black Cedar 46P (AAA 14496765) are two bulls that are in many of our cows' pedigrees. Both of these bulls have contributed so much to our mother cows.

We have utilized genetics from a few great matrons consisting of Coleman Miss Wix 923 (AAA 13393717), CHK WGN Butterfly 807 (AAA 13172142) and Ginger Hill Lass 574 (AAA 18344398).

A big percentage of our herd have the influence of these cows in their pedigrees.

Over the years we have developed many great working relationships with bull customers and fellow angus breeders. We appreciate the trust in us and our genetics and value the friendships built. A big thank you to the Frost family for providing the tour stop and our friends and family for all the help along the way.

Enjoy Montana and all the great people and the cattle on display from the Midland Empire Association. Feel free to contact us any time to discuss genetics.



VERMILION RANCH

The Goggins Family

PO Box 30758, Billings, MT 59107

(406) 259-4589 - (406) 670-0078

bcook@cattleplus.com - www.VermilionAngus.com

On behalf of Babe Goggins and the entire family and crew welcome to Vermilion Ranch. The Vermilion Ranch is full of colorful history dating back to 1867 with a pony express station and the last stagecoach stop before Coulson, now Billings.

The Vermilion Ranch is family owned and operated. There are 4 generations of family involved one way or another in the goings on at the ranch.

Our story begins in 1961 when Pat and Babe bought the ranch that lies along the Yellowstone River northeast of Billings.

In 1969 Pat bought his first registered Angus from Ross Ranch and Livestock, Jordan MT. They consisted of 200 cows with bull calves at side. He sold the bulls the following Spring and paid for the cows. We have built the cow herd to 1,250 Spring calving cows and 450 Fall calving cows. We utilize AI breeding to the extent of 95% are AI bred.

We own most all the bulls we use. Through the years they include Baldrige Oscar, Leachman Right Time, Vermilion Dateline 7078 "VRD", Connealy Spur, Casino Bomber, Sitz Commerce, and Connealy King Air to name a few.

We conduct two Performance sales annually. The first in March with 500 yearling bulls and 5,000 open commercial Angus heifers and an embryo sale featuring our best Vermilion cows mated to the best sires of the Angus breed. The second sale is in November with 350 coming 2-year-old bulls and Fall yearlings.

Also registered bred heifers and cows, along with 1,500 bred commercial heifers.

Our operation extends to include the Diamond Ring Ranch at Miles City, Pryor Creek Ranch, and South Pryor Development Center. We background several thousand Angus calves at these places and market them through Northern Livestock Video at the World-Famous Diamond Ring Sale in January.

THURSDAY, SEPTEMBER 21



BEARTOOTH ANGUS

Cory and Bethany Albin

2623 Huckleberry Ln N

Billings, MT 59106

beartoothangus@gmail.com

(406) 794-1287

We'd like to invite you to Beartooth Angus. A family-owned, growing operation here in south central Montana. Cory originally grew up farming and ranching in Sidney, MT. In 2016, myself (Cory), my wife

Bethany, and 3 children, Madelynn, Cade, and Colson moved to Red Lodge, Montana at the base of the Beartooth Mountains, with a goal to produce superior Angus cattle. We expanded our operation, in 2022, by purchasing a feedlot on the west end of Billings. We have utilized the feedlot to winter our cattle, develop bulls and heifers, and home our recip program while keeping Red Lodge acreage for summer grazing.

With our recip program we have been putting in between 130-180 embryos the last couple years. We have put in countless hours and invested in some of the most superior genetics to provide some of the best Angus genetics here in Montana. Many are sired by Square B Atlantis, Baldrige Flagstone and Musgrave Exclusive 316. We have also invested in some proven donors including Baldrige Isabel E239, SMR Henrietta Pride 8511, Montana Donna 8075, as well as some new exciting young donor prospects. Our goal is to produce quality multiple trait cattle so whether your goal is to put pounds on the ground or you're breeding for replacement in mind we've got something to fit your needs. We know everyone has different goals in mind with their cattle herd; we want to provide angus cattle to meet your goals and environmental challenges, without sacrificing structure and docility. I believe we still have a lot of work ahead of us to continue to provide superior genetics to all breeders and keep up with this changing industry.

We held our first bull sale this past February here in Billings at the Swift River Ranch. We sold 80 bulls at the sale and also had some private treaty bulls available as well. Our goal is to continue to sell between 80-100 bulls every year. Next year's bull sale will include, but not limited to, bulls sired by Square B Atlantis 8060, Brumfield Trail Boss 057, L/R Pay Day 9130, Sitz Barricade 632F and more.

We truly appreciate you taking the time to evaluate our program and thank you for participating in the Montana Angus Tour. We know you have many places to look for quality angus cattle that fits your needs. We look forward to meeting you and showing you a part of our cattle operation.



GREEN ANGUS RANCH

Larry and Jodi Green and family
 256 East Carleton Rd, RR1 Box 1051B
 Hardin, MT 59034

Larry: (406) 647-2274 - Ryan: (406) 679-2466

Welcome to the 2023 Montana Angus Tour. We are excited to have a few cattle on display at the Beartooth Stop.

I started raising registered Angus cattle in 1975. I first started with a couple of cows from Green Valley. Then in 1981 with the help of my dad we purchased 60 cows from Shoshone Angus in Crowley, Wyoming. That group included a Shoshone Viking mother and several sisters to her. I have always bred cattle that will perform in our environment. They also must be sound, docile and have good udders. They need to have do ability and have that special look to them.

We have had the wonderful opportunity to raise some great cows such as Greens Princess 7418, and Princess 1012. These cows have produced over 2 million dollars worth of females.

Their pedigree shows up in a lot of herd bulls and donor females in other programs all over the states.

Greens Savannah 9909 is another cow that has produced a lot of good ones. Most of the cowherd goes back to these females.

We bred cattle that will thrive in the commercial cattle world. We do not follow the so-called fades and or follow the "poodle" club.

We bred cattle for consistency. We want them to look like "peas in a pod". We do not bred for EPD's or exaggerate numbers that are not accurate.

We have had the opportunity to bred some great bulls that will sire consistency, doability, and have the front pasture look to them. We let the cattle promote themselves!! If we have one that does not fit what we expect then off to the sale barn it goes.

We will have several females for sale this fall. That includes heifer calves, bred heifers and some younger cows. Due to some consistent health problems, I have been encouraged to cut back.

All bulls are sold by private treaty anytime.

Thanks for coming to the Montana Angus Tour and I look forward to visiting with you all.



JC HEIKEN ANGUS & SONS

Joe, Jeralee, John, Brian, Ben & Families
 14946 Buffalo Trail, Broadview MT 59015

jcheikenangus@gmail.com - www.JCHeikenAngusAndSons.com

The Heiken family has ranched at Broadview, Montana for five generations. Over 100 years ago, Granddad Heiken moved to Montana, right after the homesteading days, to the home place just over the ridge from where Joe "JC" and Jeralee now live. Joe and Jeralee, along with their three sons, John, Brian and Ben – and with the help of their wives and children – have built a strong Angus herd focusing on raising thick, deep cattle that will sustain the harsh winters and dry summers of Montana.

Joe and Jeralee started the registered herd in 1995 by leasing some cows from Circle Oak Angus out of Pennsylvania, tracing back to Van Dyke genetics. About 5 years later, the Heikens purchased those leased cows, plus about 40 more, and haven't purchased a female since. In the early years, neighbors would help brand and pick out their own calves to save as bulls. When a steer buyer started asking for a pot load of bull calves each year, Joe realized he had something of true quality and in 2007 they held their first bull sale in Miles City and JC Heiken Angus and Sons was born.

We are a family run operation and most of the time it is all hands on deck - right down to the younger kids holding the branding iron or the high school kids pushing calves and collecting DNA. After Al'ing in the spring, we haul the pairs and bred heifers to our mountain and northern pastures where they can find shade, tall grass and cooler temperatures and save the grass around home for winter grazing. We typically wean calves in late September or early October and begin feeding them in our feedlot. Sale and private treaty bulls spend the fall and winter in large pens where they can travel and stay conditioned. The heifers are kept close to the feedlot as well to ensure they are strong and healthy for breeding. Sale bulls are hauled to Miles City for our sale the last Tuesday in February, but then brought back home to continue feeding them out and getting them in the best shape to be turned out. Bulls are delivered in the spring – hopefully before Aling, but if we are blessed with rain, you will often see us racing from the Al shed to the highway to get the bulls to our customers.

We look forward to being part of the 2023 Midland Tour. Everyone is always invited to stop by any time to see the cattle or just to visit!



WORLD WEST SIRE SERVICES

Scott & Andrea Spickard
25 Winterpast Lane, Joliet, MT 59041
scott@worldwestsire.com - (406) 628-7510
www.WorldWestSire.com

Welcome to World West Sire Services. It is our privilege to be a service provider to some of the finest seedstock operations in the world. Daily, we work alongside breeders who are considered legends across the globe. It is our primary objective to provide care for each sire as if they are our own, giving us the greatest chance of harvesting the best quality semen the sire has to offer. This in turn allows us to distribute semen to and for our customers and their clients, allowing them to meet breeding deadlines.

Our Montana journey began in May of 1992 when we moved from Hawkeye Breeders Service Inc. in Iowa to start Hawkeye West in the previous Big Sky Genetics facility owned by Jim and Norma Drayson. In 1996, Genex purchased the facility from the Jungman family and Scott helped transition the stud and managed the production until the summer of 2007 when we felt like we wanted to spend more time with our family.

World West opened the gates in the fall of 2007 and since then has become known as the 'home away from home' to some of the world's finest beef sires. Our team is evolving and we're moving forwards to future generations. We have been blessed with both of our children choosing to return to the business after completing their college degrees. That, along with the acquisition of a number of other strong team members, who contribute with enthusiasm and dedication, has allowed us to further grow our reputation for providing excellent service for our customers and their livestock. We do our best to go the extra mile and make our customers feel valued.

It is hard to put into words how much we appreciate the opportunities that we have been given and we are eternally grateful to our customers, both new and old, who entrust us with elements of their livelihoods. We are extremely proud to partner with diligent stewards of land and livestock.

We are staunch advocates for the western heritage and way of life that our customers embody every day and your choice to bring your bull to World West is not one we take lightly.



MIDLAND BULL TEST

Steve and Amy Williams
5 Bull Drive, Columbus, MT 59019
bulls@midlandbulltest.com - (406) 322-5597
www.MidlandBullTest.com

Beginning in the late 1950s, a group of cattlemen and women made a bold decision to take a different direction in breeding seedstock for the cattle industry. Leo McDonnel Sr. was a pivotal part of this group of forward-thinking ranchers with the idea to start measuring genetic traits of economic value, and then record and maintain databases for these traits. Prior to this, cattle were selected on looks alone and supported by various management and marketing schemes to attract buyers. The show ring was king! This movement by "the performance breeders" was met with huge opposition from traditional breeders and even many breed associations, who felt threatened by this new approach to include genetic merit and value when measuring cattle. The opposition was short-lived and soon such information was in demand with ranchers and feeders only buying bulls from breeders who could provide the data.

In 1962 Midland Bull Test was one of the early test sites to offer an environment where young bulls and sire offspring could be compared in a neutral environment. It gave breeders an opportunity to showcase and prove genetics. Midland was a pioneer in measuring scrotal circumference, backfat and carcass data and publishing complete animal performance data, and dam production records. Leo McDonnel Jr. stepped up to the history of Midland Bull Test's forward thinking and paved the way for one of the most important economic traits of today- efficiency. Not just claims of efficiency, but real efficiency. Efficiency obtained by weight gain with the actual measuring and recording of individual feed intake from a high roughage ration and the incorporation of maternal efficiency indicators such as RFI, which allows ranchers to benefit as much as feeders. The results of this disciplined selection initiated here by Leo Jr have been proven in multiple countries, universities and through our early customers to decrease feed and pasture costs up to 20% on ranches and feedlots. Such savings have shown significant net profits for feedlots and ranches and have positioned these efficiency sired cattle for significant sustainability premiums and claims.

Today, Steve carries on the Midland family tradition of being a forward thinker, continuing to use informative and innovative technology to develop top performing bulls from around the country. Midland continues to gather and provide more data and information than anyone in the business. Every April, the Final Sort sale offers the largest selection of balanced breeding stock with the ability to improve traits in any genetic line up. This sale has become the largest bull sale in America for efficiency tested and proven bulls.

WINDING RIVER ANGUS

Louis, Kathy & Allison Dubs
Adam, Katrina, Reagan
& Rhett Petersen

4910 Custer, Billings, MT 59106
406-652-7515 • 406-208-8643
windingriverangus@gmail.com
www.WindingRiverAngus.com

Greetings from the Dubs Family. We welcome you to the 2023 Montana Angus Tour and look forward to showing you some of our cattle. Our herd has been developing over 50



years and traces back to Louis and Kathy's FFA, 4-H and Junior Angus days in Nebraska.

In 1987 we moved to Billings from Nebraska and have been selling registered Angus cattle here in Montana since that time. Presently we calve about 100 cows. Ours is a family operation with our daughters Allison and Katrina owning a substantial percentage of the cows, the result of many years in 4-H

and Junior Angus activities.

In addition to the qualities that most Angus breeders strive for, we also take pride in our cattle's good disposition, longevity and fertility. The last few years we have placed more emphasis on carcass traits (marbling and ribeye) while maintaining structural soundness and correct phenotype. The tools we use include actual carcass ultrasound, performance data and genomically enhanced EPD's.

We sell our bulls private treaty at our Bridger, Montana location. Our Private Treaty Opening Day is the third Saturday in March which will be March 16, 2024. We also consign bulls to Midland Bull Test. Females are sold private treaty.

Our 2023 calf crop is sired by: Hoffman Thedford, LAR Man In Black, WSC Iron Horse, Sitz Resilient, Musgrave Crackerjack, HA Value Added, Baldrige Movin On and WRAF Party Top. Our 2024 calf crop will include calves from Wilks Regiment, Raven Republic, Yon Saluda, KCF Bennett Exponential, Virginia Tech Statesman, S Armstrong, LAR Man In Black, Deer Valley Brigade and WRAF Party Top. We use a large number of sires to increase genetic diversity within our herd.

Our two locations have been showcased on previous Montana Angus Tours. The 2000 tour visited our summer pasture nine miles north of Columbus on the Rapelje Highway. Our wintering and calving location four miles south of Bridger on Highway 72 was a lunch stop on the 2008 Tour. This is also where we feed out our Private Treaty bulls.

Please join us Thursday, September 21 at the lunch stop at Midland Bull Test. We will be one of the Guest Hosts with our cattle displayed there. We look forward to visiting with old friends and meeting new ones. Please contact us anytime. Thank you for your interest.

McDONNELL ANGUS

Leo & Sam McDonnell

70 Sheep Dip Rd, Columbus, Mt 59019
Leo: (406) 780-0176 - Sam: (406) 321-0655

leomcd@hotmail.com - www.McDonnellBeefCountry.com

McDonnell Angus Beef Country Genetics the Efficiency Breeder of Columbus, Montana run by Leo and Sam McDonnell with herds in Montana, North Dakota, and Kansas with a sale in late November. The sale offers 18-month-old bulls, fall yearlings and both commercial and registered bred heifers.

McDonnell Angus was started in the lates 1960's with a focus solely on performance and emphasis on the cow.

In 2008, we invested very heavily in a feed intake system developed by Vytelle/GrowSafe at Midland Bull Test developing a program with a baseline of genetics designed and selected for efficiency with the cow-being the starting point.

Since selecting for just feed conversion or Average Daily Gain increase cattle's feed intake, McDonnell and others started incorporating Residual Feed Intake (RFI). Including RFI in the selection panel has allowed us to develop cows that produce at the same weaning weight level that are not only lower intake on the range but still very efficient in the feedlot.



The progeny off these Efficiency bred bulls have now been tested and proven at several feedlots across the country with pen and sire progeny feed conversions as low as 4.9 lbs./pound of gain.

Through all these years we have balanced feed conversion in the feedlot with RFI to reduce intake in the cowherd and kept the same level of genetic pressure for Maternal integrity-stressing fertility, feet, udder and teat integrity, and longevity.

Our greatest asset and friends are our customer, whom without them neither Midland or McDonnell Angus would exist.— Thank you for your trust and guidance,

We have been fortunate to have all four of our children involved in one way or another over the years with our business, as well as our 16 grandchildren.

Son Steve and Amy took over Midland Bull Test several years ago and continue to grow it.

Victor and daughter Darcy Goni ranch south of Buffalo, Wyoming have some of our cows and are using our genetics. They have their Bulls of the Big Horns sale in April.

Daughter Kelsey is in Buffalo, Wyoming and has done very well with her art and art shows. She also helps run the Jim Gatchell Memorial Museum at Buffalo and recently received was one of 4 museums across the U.S., to be honored to win the 2023 National Medal for Museum and Library Service.

Daughter Buffy and Tom live near Midland, with Buffy teaching kindergarten at Columbus and Tom owns and runs Mandeville Insurance in Columbus and Red Lodge.



HUNT CREEK ANGUS

244 N. Silver Tip Road, Bridger, MT 59014
 Lowell: (406) 425-2006 - Grant: (406) 698-5077
 Clint: (406) 426-8799 - Sonya: (406) 697-4887
 huntcreekangus@gmail.com

Hunt Creek Angus welcomes all to the 2023 Montana Angus Tour. We feel privileged to be apart of the Angus Industry. We are a grassroots ranching Family with Great Grandparents that homesteaded and settled in Carbon County. Our cows and calves will be at Midland Bull Test during the Tour. We appreciate Leo, Sam, Steve, and Amy for extending this invitation to us.

Our Angus cows are not pampered as most of the cattle in Montana endure heat, drought, subzero temperatures, cold wind, and deep snow. The list gets bigger with passing years. The cows that stay in the herd are proven to have the traits that it takes to raise quality seed stock. We use A.I. to refine our herds genetics, mating carefully to keep balanced Bulls and Heifers. We have Rawhide, E&B New Addition and Growthfund calves to showcase with their Dams for the Tour. One example of our Bulls performance was at Midland Bull Test in April with an ADG of 4.5# on test with a great feed efficiency out of a Hoover Know How Bull on a Casino Bomber Dam. Our cows feet and udders stay correct as they age. We all manage our own cows calving in January which is asking a lot from our cows. We wean close to Labor Day and have Bulls on grass hay & bull pellets on each of our own places till sale day. Bulls and Heifers are carcass ultrasounded and freeze branded.

We have our annual Bull Sale in December at Miles City Livestock Commission going on its 27th year. We are very appreciative of our loyal customers who have become our Friends that we really enjoy working with. Looking forward to visiting with all those on the Angus Tour.

BASIN ANGUS RANCH

Doug, Sharon, & Nicole Stevenson
 Doug: (406) 350-0350 - Nicole: (406) 350-2222
 Trevor Berg (406) 366-3612 - www.BasinAngus.com

Basin Angus Ranch was established in 1972 when Wayne and Marian Stevenson moved their share of the original Stevenson Angus cow herd to a new ranch. With three young children, Valerie, Doug, and Clint, and 125 head of registered Angus cows, a new chapter began.

For 20 years, Wayne and Marian added land and cattle, growing the herd to over 1,000 cows. Doug and Sharon were married in 1985 while attending Montana State University, and in 1990 returned to the ranch.



Wayne's untimely death in 1994 had a profound and lasting effect on the family and the ranch. Wayne was the glue that held everything together. Following Wayne's death, Doug and Sharon took over management of Basin Angus.

From 1994 until 2010, the ranch and cowherd continued to grow to over 2,000 cows. Doug and Sharon started a family of their own, having three daughters: Brittany, Leisa, and Nicole. During this continued expansion, the Basin program was having a positive impact on cow herds across the country. However, the large scope of the operation became complex and cumbersome. The combination of drought, tough economic conditions and the discovery of new genetic conditions turned the management of the large-scale operation into a chore. The difficult decision was made, and in 2010 the Basin Angus cow herd and land near Hobson was sold.

Basin Angus had embryo pregnancies born in cooperator herds in 2011 that were the start of a new chapter for the program. Those ET calves included Basin Payweight 1682, Basin Joy 1036, Basin Lucy 1037 and Basin Lucy 1667, that are the foundation of the current herd.

In 2012, Doug, Sharon and their three girls relocated to south-central Montana, near Billings. Brittany married Trevor Berg in 2016, and Trevor now manages the ranch. Leisa married Brady Johnson in 2019, and they currently live in Hobson. Nicole is also on the ranch and is starting to manage the bull development and marketing.

The new Basin headquarters near Reed Point was purchased in 2016. The cow herd has expanded to 600 cows. We currently sell over 200 bulls each year through a March bull sale and by private treaty.

This Fall we are commemorating the legacy started by Wayne and Marian 51 years ago by hosting our first female sale since 2010. Please join us October 21, in Billings, Montana for the Basin Angus "A Lasting Legacy" Female Sale.

Montana
 ♦ 2023 ANGUS TOUR ♦

SEPTEMBER 19TH-21ST

SPONSORED BY MIDLAND EMPIRE ANGUS ASSOCIATION



MONTANA
2023-24
DIRECTORY
ANGUS

2 Bar Livestock

Chase Ostrum
PO Box 32
Fishtail, MT 59028
chaseostrum@gmail.com
(406) 780-1146

3210 Angus

John Patterson
123 Patterson Ranch Road
Columbus, MT 59019
blkcow@hotmail.com
(406) 445-2332
(406) 425-3210

3C Cattle LLC

Chad & Lacey Sutherlin
3858 Illinois Bench Road
Stevensville, MT 59870
threecattleco@yahoo.com
(406) 360-1875
406-544-0043 (Lacey)
www.3CCattleLLC.com
See ad on page 51

3Y Bar Cattle Co.

Brandon Hoerner
10 E Paisley Ln.
Glasgow, MT 59230
(406) 396-9700

4 Butte Cattle Co.

Kent & Judy Pike
445 Four Butte Lane
Chinook, MT 59523
fourbuttes@hotmail.com
(406) 357-2994

406 Cattle

Cody Sutherlin
418 Spooner Creek Ln
Stevensville, MT 59870
cjsutherlin@gmail.com
(406) 207-9176

7 Bar Heart Registered Angus

Greg Gould & Aimee Hachigian-Gould
PO Box 67
Ulm, MT 59485
MT7BARHEART@aol.com
(406) 866-3513 • (406) 899-7227
(406) 799-7051
Andrew & Ashley Gould: (406) 231-9601
Brandon & Katelyn Gould: (406) 590-4932

9-F Ranch Co. Inc.

Russell Berg
PO Box 83
55 BB Dr.
Martinsdale, MT 59053
9-frch@mtintouch.net
(406) 572-3636

A

A Bar Angus

Duane & Julie Wacker
1100 Alec Roy Road
Roundup, MT 59072
wackerdj@midrivers.com
(406) 323-4456 • (406) 861-7459

Adams, Gary

See Yellowstone Boys & Girls Ranch

Adams, Gary & Holly

7419 Hesper Rd.
Billings, MT 59106
gary@legacylandslc.com
(406) 855-5230

Agri-Best Feeds

Scott Anderson
47 N. 15th Street
Billings, MT 59101
scott@agribestfeeds.com
(866) 601-6646
www.AgriBestFeeds.com
See ad on page 40

Ahearn, Mark

See Turner Meadow Ranch

Aiton Angus

Sam & Leslie Aiton
PO Box 730
Harlowton, MT 59036
la@itstriangle.com
sta@itstriangle.com
(406) 632-4151 • (928) 713-5900
www.AitonAngus.com

Aiton, Sam & Leslie

See Aiton Angus

Albin, Cory

See Beartooth Angus

Andersen, Scott & Nicole

See Blacktail Angus Ranch

Anderson, Scott

See Agri-Best Feeds

Apex Angus

Daryle & Pam Swanson
8056 Valier Hwy. • Valier, MT 59486
apex@3rivers.net
(406) 279-3548 • (406) 472-3341
www.ApexAngus.com
See ad on page 55

Armstrong Angus Ranch

Chad Armstrong
55 Cemetery Hill Road
Cardwell, MT 59721
armstrongangus@live.com
(406) 224-0586
www.ArmstrongAngusRanch.com
Trista Armstrong: (406) 565-2718
Klancy Armstrong: (406) 565-0654
Kyra Armstrong: (406) 565-2750
See ad on page 16

Arntzen Angus Ranch

Kevin, Brad, Keith Arntzen
577 Arntzen Lane
Hilger, MT 59451
arntzen@mtintouch.net
(406) 350-1612
www.ArntzenAngus.com
Brad Arntzen: (406) 350-4000
Kevin Arntzen: (406) 350-1728
See ad on page 15



FLESCH ANGUS

NEW DATE. SAME PROGRAM.
JANUARY 26TH 2024

HOME: 406.337.3402 JEFF: 970.290.4353 | JEFFFLESCH@AOL.COM

FLESCHANGUS.COM
Montana Angus News

Ash Creek Angus
 Bill & Vicky Tusler
 PO Box 636
 352 Ash Creek Road
 Terry, MT 59349
 bvtusler@midrivers.com
 (406) 486-5641

B

B & K Livestock
 Bryan Vincent
 6647 N. Kolin Rd
 Moccasin, MT 59462
 bnkvncn@gmail.com
 (406) 423-5313

B & L Farm & Ranch LLP
 Bruce Hould
 5867 Hwy. 363
 Malta, MT 59538
 houldrch@itstriangle.com
 (406) 654-1762

Ballyhoo Printing & Design
 Gerri Campbell
 187 West Frontage Road
 Lewistown, MT 59457
 (406) 538-7988
 gerri@ballyhooprinting.com
 www.BallyhooPrinting.com
 See ad on page 8

Balthrusch, Nathan
 See FBA Ranch

Bar 9 Ranch
 Clayton Hofeldt
 1060 Treasure Lane
 Lloyd, MT 59535
 (406) 357-2358
 bar9ranch@gmail.com

Bar JV Angus
 Jim, Dale, or Cody Vitt
 14043 County Road 340
 Fairview, MT 59221
 barjvangus@gmail.com
 (406) 798-3398 • (406) 480-5676
 (406) 798-3653
 www.BarJVAngus.com
 See ad on page 65

Barragree Cattle Co
 Brian Barragree
 Box 562 • Absarokee, MT 59001
 (406) 780-1219
 Zane Barragree: (406) 425-1720

Basin Angus
 Leisa & Brady Johnson
 PO Box 198
 Hobson, MT 59452

Basin Angus
 Trevor & Brittany Berg
 #17 Pinewood Dr.
 Park City, MT 59063
 (406) 366-3612

Basin Angus Ranch
 Doug, Sharon, Nicole Stevenson
 PO Box 1119 • Laurel, MT 59044
 doug@basinangus.com
 sharon@basinangus.com
 Doug: (406) 350-0350
 Sharon: (406) 350-2332
 Nicole: (406) 350-2222
 Shane Whiteman: (406) 366-0688
 Jeff Wood: (406) 899-9513
 www.BasinAngus.com
 See ad on Back Cover

YOUR FORAGE +  **+ REDMOND** **= COMPLETE BALANCED RATION**

FLAX & MOS STANDARD *NO MOLASSES NO UREA*

GET UP TO 25% MORE digestible energy, protein, and other nutrients from your forage with SweetPro.

- Protein
- Energy
- Minerals
- Vitamins
- ProBiotin
- a powerful digestive aide chelated & crystalloid*

Breeding High Mag Flax Weaning MOS Stress

IT'S IN THE PROGRAM

AVAILABLE WITH NATURAL EXTRACTS

Stress? Clove, Cinnamon, & Chili Pepper Extracts

Insects? Garlic Extract 

866.601.6646

Agri Best Feeds

 **ARROWQUIP**



On the Move...

We've relocated ranch headquarters from Wise River to Grant, Montana.



Angus with Altitude

ANNUAL PRODUCTION SALE

Monday

*Same day,
Same location!*

FEBRUARY 26, 2024

125 YEARLING & LONG YEARLINGS

1:00 PM • DILLON, MONTANA
DILLON LIVESTOCK AUCTION



WXW Timberline



Circle L Silverbow



AAR Essential 9707

Reference Sires:

- WXW Timberline
- Circle L Silverbow
- Circle L Boone
- AAR Essential
- Circle L Gusto
- Circle L Centennial
- Circle L Gus

CORY & KARI LAMEY

New address!

8525 MT Hwy 324 • Dillon, MT 59725
circlelangus@yahoo.com • 406-491-7363

CIRCLELANGUS.COM



BB Ranch

William Brennan
854 Hwy. 359
Cardwell, MT 59721
cbrennan6@juno.com
(406) 287-7942

Beartooth Angus

Cory Albin
2810 Central Ave, Ste A
Billings, MT 59102
beartoothangus@gmail.com

Beck, Dick

See ORIGen Inc.

Bennett, Porter

See Hollow Top Angus

Berg, Russell

See 9-F Ranch Co. Inc.

Berg, Trevor & Brittany

See Basin Angus

Berry, Eli

124 McKeith Road
Reed Point, MT 59069
berry_eli@hotmail.com
(406) 780-0215

Best Angus & Quarter Horses

Pete Best
1930 118th Ave NW
Watford City, ND 58854
bestangus@yahoo.com
(701) 570-6959 • (701) 842-4865
www.BestAngusAndQuarterHorses.com

Beuerman Angus Ranch

Erich Beuerman
135 Meriwether Rd
Cut Bank, MT 59427
ebeuerman1@gmail.com
(406) 551-3759

Bickle Cattle Co.

Bill Bickle
371 Westmore Road
Ismay, MT 59336
billbickle@hotmail.com
(406) 772-5852

Big Dry Angus Ranch

Brent and Jack McRae
32 McRae Lane
Jordan, MT 59337
bdar@outlook.com
www.BigDryAngus.com
John McRae: (406) 852-4481
Jack McRae: (406) 557-6266
(406) 977-2778

Bignell Angus Ranch

Jim & Carrie Bignell
PO Box 377
Avon, MT 59713
cbignell7692@gmail.com
(406) 492-7692

Black Pine Farm

Bill Jensen
26 Wilson Road
Heron, MT 59844
bpfangus@yahoo.com
(406) 847-2733
(406) 250-2289

Black Wave

Brian Considine
2400 Marker Road
Middletown, MD 21769
brian_considine@hotmail.com
(301) 748-6057

Blacktail Angus Ranch

Scott & Nicole Andersen
7700 Hwy. 91 N
Dillon, MT 59725
sanderson7700@gmail.com
(406) 683-4980
www.BlacktailAngus.com

Cactus Cattle Company
Annual Bull Sale
Thursday, March 28, 2024
Belle Fourche Livestock Market - Belle Fourche, SD
Online Bidding 
Coming 2 yr old Black Angus Registered Bulls
Bulls Sired By:
Cactus Achievement, Cactus Trending Star
RM Baron, RM DUNL Cortachy Boy
RM 2Trend, RM Mustang
www.cactuscattleco.com
Plena, Montana - (406) 772-5811

SAVE THE DATE
Join us Monday APRIL 1st at the Ranch
in Havre Montana or online with
Frontier Live!
**SELLING OUR TOP 40
ANGUS YEARLING BULLS**
Lunch at NOON
SALE at 1:00pm
FEATURING SONS OF:
RM McLendon 9599
McCumber Tribute 9180
RM Scottsman 9625

Casey Fitzsimmons
406-459-6891
Nathan Baltrusch
406-570-8646
[WWW.FBARANCH.COM](http://www.fbaranch.com)

JC HEIKEN ANGUS & SONS

17TH ANNUAL PRODUCTION SALE

TUESDAY, FEBRUARY 27, 2024 1:00PM

MILES CITY LIVESTOCK COMMISSION MILES CITY, MONTANA

SITZ INCENTIVE

AAA 19677938



Incentive sons topped our 2023 sale ... this year's offering will be just as good, with 50 sons to pick through!

HA COWBOY KIND

AAA 19274974



Cowboy Kind is still our go to heifer bull and we will be offering more of these moderate sons in the sale

Come visit us during
this year's Montana
Angus Tour!

Broadview progeny continue to be standouts in our herd. You can expect to find your next herd sire in the 30 sons to be featured in the 2024 sale

HEIKEN BROADVIEW

AAA 19421003



Call for more information or to discuss semen sales

John (406)855-7839 * Brian (406)861-3151 * Ben (406)860-7331 * Joe (406)861-1020



Check out our website or follow us on Facebook for the most up-to-date information
www.JCHeikenAngusAndSons.com or facebook.com/JCHeikenAngusAndSons



Docile



PAP Tested



Moderate Framed



Strong EPDs

Because Balance Never Goes Out of Style



ELLINGSON PREEMINENT

Semen Available for Sale

ANNUAL PRODUCTION SALE

FALL 2023

Featured Sires



SITZ PROFOUND 680G



HA COW MAN 7939



TEHAMA TAHOE B767





HOFFMAN THEDFORD 0061

Including sons of Sitz Continuity 11579, Circle L Gus 230B and Sitz Resilient 10208

WWW.HOLLOWTOPANGUS.COM

RANCH OFFICE: 406-552-0491

CATTLE OPERATIONS: Clay Clarke 406-223-5078

  @hollowtopangus

We breed for the commercial buyer. Our bulls are not pushed during their first year in order to allow their feet and carriage to become strong and sound. All of our bulls and heifers are PAP tested.

Blevins Angus Ranch

Wayne Blevins
 38306 Dellwo Road
 Charlo, MT 59824
 blevinsangus@blackfoot.net
 (406) 644-2309
 (406) 274-2732
 www.BlevinsAngusRanch.com

Blevins, Craig

See Rafter E Angus, LLC

Blevins, Wayne

See Blevins Angus Ranch

Bobcat Angus

Bryan Ratzburg
 265 Bobcat Angus Loop • Galata, MT 59444
 bobcatangus@northerntel.net
 Bryan: (406) 937-5858
 www.BobcatAngus.com
See ad on page 87

Bodner Angus

Ken Bodner
 5918 Limestone Canyon Rd.
 Raynesford, MT 59469
 bodner@everestkc.net
 (406) 735-4417 • (913) 522-4922

Bohle Angus Ranch

Kalyn & Leslie Bohle
 PO Box 165
 Plevna, MT 59344
 bohle@midrivers.com
 (406) 772-5898 • (406) 853-5391

Boka, Josh Kevin Peterson

See Mountainview Insurance

Boyd Angus Ranch, LLC

Ellis & Rhonda Boyd
 PO Box 99
 Alder, MT 59710
 boydangusmt@gmail.com
 (406) 842-5645
 Mark Boyd: (406) 596-5646

Boyd's Cottonwood Ranch

Bob Boyd
 PO Box 77
 Clyde Park, MT 59018
 bobboydtkq@gmail.com
 (406) 686-4415
 (406) 686-4137

Bradley Livestock LC

Beau & Deb Bradley
 PO Box 295
 Twin Bridges, MT 59754
 kendra@rubyvalleyaviation.com
 (406) 684-5939

Braun Creek Angus

Harvey & Lynn Thompson
 423 Braun Creek Rd.
 Geysers, MT 59447
 (406) 735-4460

Breitmeier, Ede

See E 7 Angus

Brennan, William

See BB Ranch

Britzman, Dick

See Lazy Bar B Ranch

Bromenshenk Farms

Brenda Bromenshenk
 4715 Grand Avenue
 Billings, MT 59106
 b.bromenshenk@bresnan.net
 (406) 861-7173
 Cortney Bromenshenk: (406) 861-2452
 Garrett Bromenshenk: (406) 855-0174

Brooks, Thomas G

See Front Range Investment LLC

PROUD TO WORK WITH MONTANA ANGUS PRODUCERS!

- Current Industry News Weekly
- Timely Sale Reports
- Breeder Features
- Regional Events & Happenings
- Professional Ring Service
- Sale Catalog & Flyer Design & Printing



THE CATTLE BUSINESS WEEKLY

P.O. Box 700 • Philip, SD, 57567
 Phone: 605-859-2022



Andy Rest
 Ad Sales/Ring Service
 Billings, MT
 406.670.5678

www.cattlebusinessweekly.com

Jacobs Livestock Sales Inc.



Proud to be working with Montana's Top Angus Breeder's!

October 2023

- 10 Coleman Angus Ranch - Charlo, MT
- 11 Montana Ranch - Big Fork, MT
- 21 NILE Angus Female Sale - Billings, MT
- 21 Basin Angus Ranch - Billings, MT

November 2023

- 11 Montana Ranch Bull Sale - Big Fork, MT
- 14 Reminsice Angus Ranch - Dillon, MT
- 17 Green Mountain Angus Ranch - Ryegate, MT
- 25 Vermilion Ranch - Billings, MT
- 27 Stevenson's Diamond Dot - Hobson, MT
- 28 Stevenson Angus Ranch - Hobson, MT

Roger Jacobs
is Montana's busiest, most
trusted and experienced
auctioneer with 40 plus years
of auction experience and is a
licensed real estate broker with
38 years of real estate sales
experience.

**Call today to book your production sale or visit about listing your farm
or ranch at Premier Land Company.**

Roger & Sandy Jacobs

7445 Highway 312 East • Billings, MT 59105 • Phone: (406) 698-7686
roger@premierlandcompany.com • www.JacobsLivestock.com

December 2023

- 7 Sitz Angus Ranch - Harrison, MT

February 2024

- 7 Beggar's Diamond V - Wibaux, MT
- 13 Felton Angus Ranch - Big Timber, MT
- 22 VanDyke Angus Ranch - Manhattan, MT
- 24 Never Sweat Ranch - Missoula, MT
- 27 Connelly Angus Ranch - Valier, MT
- 28 Stortz Angus Ranch - Glendive, MT

March 2024

- 1 Reminsice Angus Ranch - Dillon, MT
- 5 Apex Angus Ranch - Valier, MT
- 6 Ox Bow Ranch - Wolf Creek, MT
- 13 Stevenson Angus Ranch - Hobson, MT
- 22 Vermilion Ranch - Billings, MT
- 25 Larsen Angus Ranch - Forsyth, MT
- 28 Gartner-Denowh Angus Ranch - Sidney, MT

April 2024

- 3 Nissen Angus Ranch - Chinook, MT
- 4 Arntzen Angus Ranch - Hilger, MT
- 13 Math Farms Angus - Glasgow, MT
- 24 Miske Angus Ranch - Glendive, MT

Brown, Colter

See Northern Ag Network

Brown, David

See Montana Ranch, LLC

Brown, David & Seana

See Western Management, LLC.

Brubaker, Loren

See Genetic Connection

BTD Ranch, Inc (Duncan Ranch Co)

Bruce Duncan
625 2100 Road E
Joplin, MT 59531
btduncan@itstriangle.com
(406) 292-3503
www.DuncanRanch.com
Neal: (406) 945-0785
Tammy: (406) 399-6292

Buckner, Hans & Diana

See Split Diamond Ranch

Bumgarner Angus

Jim Bumgarner & Hilda Mordhorst
343 Brenizer Road
Wibaux, MT 59353
bumgarnerangus@gmail.com
(406) 795-8125

C**C Spear Angus**

Bill & Codi Cook
1980 Nth 5th Rd
Huntley, MT 59037
cookbill44@gmail.com
(406) 670-0689
Jess & Lana Matt
PO Box 149, Bridger, MT 59014
(406) 670-6311
See ad on page 71

Cactus Cattle Company

Bob & Missy Thielen
211 Burnt Station Rd.
Plevna, MT 59344
mt.rancher.27@gmail.com
(406) 772-5811
www.CactusCattleCo.com
See ad on page 42

Callantine, Jake & Jane, Krista, Cate

See Timber Line Ranch

Campbell, Gerri

See Ballyhoo Printing & Design

Carey Jr., Tom

See XC Ranch Inc.

Carrel, John

See H C Cattle

Christensen, Shawn & Jennifer

See SpringVale Ranch

Christofferson Farms

Ross Christofferson
PO Box 1540
Malta, MT 59538
rc16@itstriangle.com
(406) 301-0887

Circle C Angus

Kenneth Clawson
4450 MT Hwy. 200 E
Missoula, MT 59802
(406) 549-9658

Circle L Angus

Cory Lamey
8525 Hwy 324
Dillon, MT 59725
circlelangus@yahoo.com
(406) 491-7363
www.CircleLangus.com
See ad on page 41

Clark, Leah

See NILE Stock Show & Pro Rodeo

Clawson, Kenneth

See Circle C Angus

Clear Creek Angus LLC

Teddy & Sara Crowley
14615 Paradise Valley Rd.
Chinook, MT 59523
ccangus@mtintouch.net
(406) 395-4962 • (406) 399-0403
www.ClearCreekAngus.com
See ad on page 53

Cocergine, Nicolai B.

P. O. Box 4415
Butte, MT 59702
(406) 782-3266

Cole Creek Angus Ranch

Greg Golden
PO Box 94
Joliet, MT 59041
(406) 962-3743
(406) 839-7588
(406) 694-7254
www.ColeCreekAngusRanch.com
See ad on page 10

Coleman Angus Ranch

Larry Coleman
40067 Morris Road
Charlo, MT 59824 • (406) 240-2751
colemanangus@blackfoot.net
www.ColemanAngus.com
Jeremy Haag: (406) 833-0117
See ad on page 2

Connelly Angus Inc.

Don Connelly
1950 Dean Road
Valier, MT 59486 • connelly@3rivers.net
(406) 279-3569 • (406) 899-3826
www.connellyangus.com

Considine, Brian

See Black Wave

Cook, Bill & Codi

See C Spear Angus

Craft, Les

See Les Craft Angus

Creighton-Smith, Kathy

See ET Cows, Inc.

Cross, Marvin

See Top Notch Angus

Crowley, Teddy & Sara

See Clear Creek Angus LLC

Currant Creek Angus

Gary & Phyllis Eliasson
PO Box 389
Roundup, MT 59072
ccar@midrivers.com • (406) 323-1024
www.CurrantCreekAngus.com
See ad on page 50

D**Davis, Jennifer**

See Rollin' Rock Angus

Davis, Karen Harrer

See Windy Ridge Angus

DeBoo, Mark

See Diamond D Angus

DeGrand Angus Ranch

Amanda DeGrand
PO Box 937
Baker, MT 59313
ajdklc@midrivers.com
(406) 775-8861
www.DeGrandAngus.com



Customer Service- Providing health, feedlot and grid performance data for our customers for over 25 years.

Reminisce Cows- Cow herd performance starts with measuring structural soundness and disposition. If these 2 traits aren't in order, it doesn't matter how fertile she is or how big of calf she can raise.

Reminisce Bulls- Born and raised in altitudes above 7,000.' Developed on a 41 mega cal ration; Summered in big sage brush pastures to learn to travel in big country.

How Good are Your Cattle?

Bragging rights on performance begin and end on the rail. On that day you will know how healthy they were, how well they gained, how well they converted, and how well they will taste to a consumer that doesn't know you. We all sell our cattle by the pound and on that day you will be paid accordingly. Do you know how good your cattle are? Reminisce Angus customers do. They have the data. They have the bragging rights.



AAA# 19793942	DOB: 06/01/2019					
CED	BW	WW	YW	M	MB	RE
+9	-1.6	+25	+32	+15	+41	+28



AAA# 19793944	DOB: 06/04/2019					
CED	BW	WW	YW	M	MB	RE
-5	+2	+39	+62	+16	+83	+35



AAA# 19793855	DOB: 06/02/2019					
CED	BW	WW	YW	M	MB	RE
+10	-1.9	+49	+90	+25	+64	+69

Annual Bull Sale

MARCH 1, 2024

1:00 PM at the Big West Feeding Facility, Dillon, Mont.

165 Head Sell
Including 35 Embryo Bulls

REAL AMERICAN OUTCROSS GENETICS

BRYAN & MARCIA MUSSARD

6101 Sweetwater Rd. Dillon, MT • 406-925-1416 • 406-683-6363 • bryanmussard406@gmail.com

www.RemAngus.com

Deichmann Livestock Brokerage

Dan Deichmann
 PO Box 310
 Hobson, MT 59452
 deichmannlivestock@gmail.com
 (406) 423-5500 • (406) 799-5200

Denowh, Chad

See Gartner-Denowh Angus Ranch

Denowh, Mick

See Gartner-Denowh Angus Ranch

DH Registered Angus

Dale Hofeldt
 6050 Crown Butte Road
 Lloyd, MT 59535
 (406) 357-3785

Diamond D Angus

Mark DeBoo
 18106 Valier Hwy
 Valier, MT 59486
 dda@3rivers.net
 (406) 279-3633 • (406) 799-3480
 www.DiamondDngus.com
 See ad on page 14

Doddridge, Paul

See KG Ranch

Doubet, Cate

See Timber Line Ranch

Double Horseshoe Ranch

Wes Mapston
 25500 Hwy. 93
 Arlee, MT 59821
 (406) 726-3396

Dubs & Family, Louis & Kathy

See Winding River Angus

Duncan, Bruce

See LTD Ranch, Inc. (Duncan Ranch Co.)

Dvorak Angus

Cathy Dvorak
 2945 Tyler Creek Rd.
 Lewistown, MT 59457
 dvorakcathy@gmail.com
 (406) 366-0564

Dye Ranch

Heather Dye
 1825 Windham Benchland Rd
 Stanford, MT 59479
 hdyeranch@hotmail.com
 (406) 350-2793

E**E 7 Angus**

Ede Breitmeier
 PO Box 1807
 Chinook, MT 59526
 e7angus@itstriangle.com
 (406) 357-3491 • (406) 344-0078

Edwards Angus Ranch

A. Clifford Edwards
 1648 Poly Drive, Suite 206
 Billings, MT 59102
 marlene@edwardslawfirm.org
 (406) 256-8155 • (888) 926-2588

Elkins Angus

Elsmer Kenneth Elkins, Jr.
 1828 N Washington Street
 Bismarck, ND 58501 • (701) 223-3791
 kenelkins2010@yahoo.com

Eliasson, Gary & Phyllis

See Currant Creek Angus

Elmose Angus Ranch

Mike & Casey Elmose
 18880 Schuringa Lane
 Three Forks, MT 59752
 in2catl@aol.com • (406) 580-6973
 Casey: (406) 580-6579

Welcome to the 2023 Montana Angus Jour.

Offering

"Currant Genetics for Current Times"

December 2, 2023 at the ranch

April 23, 2024 at Miles City Livestock



Gary & Phyllis Eliasson and family

Roundup, MT 59072

Gary's cell: 406-320-1142

Phyllis' cell: 406-320-0097

Tyler's cell: 406-320-1415

Office: 406-323-2227

Facebook @ Currant Creek Angus Ranch

Selling Sons of

Baldrige Highlander

Connealy National

Kesslers Commodore

Mead Magnitude

Musgrave Crackerjack

Poss Rawhide

Sitz Resilient

Schafer Full Power

Square B Altantis

Square B True North



3C CATTLE

Same Great Genetics / Same Great People / One Brand

Formerly the Bulls of the Bitterroot Sale

13th Annual Angus Bull Sale

March 2, 2024

SUTHERLIN FARMS FEEDLOT • STEVENSVILLE, MT
Sale begins at 1PM Mountain Time • Lunch served at Noon

Selling 50+ Yearling Angus Bulls

50+ Fancy No Brand Commercial Angus Heifers



SUPERIOR
LIVESTOCK AUCTION

bid.superiorlivestock.com | 800.422.2177

406/ 360-1875

Chad, Lacey & Cayden Sutherlin

Chad 406-360-1875

Lacey 406-544-0043

406/ 207-9176

Cody, Mindy, Tripp & Jett Sutherlin

406/ 360-1246

Loren Brubaker

Loren 406-360-1246

WWW.3CCATTLELLC.COM

Let's Have a Sale!



I welcome the
opportunity to
work with you in
merchandising
your Registered
Angus Cattle!

Joe Goggins
Purebred Auctioneer

4935 Powmer Road
Billings, MT 59105
Cell 406-861-5664
Home 406-373-6844

ET Cows, Inc.
Kathy Creighton-Smith
130 Huckleberry Ln.
Florence, MT 59833
etcows@itstriangle.com
(406) 949-2505

F

Fitzsimmons Baltrusch Angus (FBA) Ranch

Casey FitzSimmons
PO Box 474
Canyon Creek, MT 59633
casey@fbaranch.com
(406) 459-6891

Nathan Baltrusch
PO Box 1744
Havre, MT 59501
nathan@fbaranch.com
(406) 570-8646
www.FBAranch.com
See ad on page 42

FF Ranch

Trevor Motichka
46619 Leighton Rd.
Ronan, MT 59864
tmotichka@mwfbi.com
(406) 212-5111

Field, Gregory W.

See Tri Mountain Angus

First West Insurance

Aaron Odegard
1905 Stadium Dr.
Bozeman, MT 59715
aaron@fstwest.com
(406) 587-5111
www.1stWestInsurance.com

Fish Creek Ranch

Ronald Rule
440 Starfire Ln.
Alberton, MT 49820
rule438@gmail.com
(505) 681-0810
Marc Haskins: (406) 382-0556

Fleming Stock Farms

Duncan & Cecilie Fleming
Box 1
Granum, Alberta T0L 1A0
flemingangus@xplornet.com
(403) 687-2288
(403) 625-0427

Foran Angus

Todd & Eva Foran
10233 Winifred Hwy 236
Hilger, MT 59451
(406) 462-5663

Foss, Cory & Sarah

See Pleasant Valley Angus

Fredericks, Shawn

See Nueta Cattle Co.

Front Range Investment LLC

Thomas G Brooks
19 Dear Lane Loop
Vaughn, MT 59487
fronrangecattle@gmail.com
(406) 369-0903

Frosty Creek Angus Ranch

Terry Frost
357 Rehder Rd.
Roundup, MT 59072
frostangus@midrivers.com
(406) 323-3415
www.FrostyCreekAngus.com

Frye Cattle Company

Ron Frye
PO Box 1363
Three Forks, MT 59752
ronfryemarketing@gmail.com
(406) 600-7514

G

GaLor Angus

Gail Vennes
8393 US Hwy 287
Townsend, MT 59644
glvennes@mt.net
(406) 431-1009

Gardner Angus Ranch

Raymond Gardner
PO Box 19
Winnett, MT 59087
gardner@midrivers.com
(406) 351-9283 • (406) 429-2575
www.GardnerAngus.com

Gartner-Denowh Angus Ranch

Chad Denowh
34751 County Road 127
Sidney, MT 59270
chadd@midrivers.com
(406) 798-3541 • (406) 489-1762
www.GDAR-Angus.com
See ad on page 88



Clear Creek Angus

16TH ANNUAL PRODUCTION SALE

03.04.2024

BEAR PAW LIVESTOCK, CHINOOK, MONTANA

Offering 65 Angus Yearling Bulls | 15 Hereford Yearling Bulls
Registered Angus Replacement Heifers | F1 Baldy Replacement Heifers

COMMERCIAL BRED HEIFERS AVAILABLE FALL OF 2023

Featuring Sons of



Mohnen Reckoning - His first sons sell!



SAV Quarterback- His sons sell!



Sitz Stellar - Sellings Sons & Grandsons



Sitz Spectrum - His sons sell!

Other sires include- Vermilion Victory, Clear Creek Stellar 0200, Clear Creek Galactic 005

Teddy & Sara Crowley (406)-399-0403 | (406) 395-4962 | clearcreekangus.com

Don & Dolly Weaver (406) 390-4757 | (406) 386-2244 | weaverherefords.com

Selling on **DVAuction**
Broadcasting Real-Time Auctions

Gartner-Denowh Angus Ranch

Mick Denowh
34750 County Road 127
Sidney, MT 59270
gdar@midrivers.com
(406) 489-0172
www.GDAR-Angus.com
See ad on page 88

Gaugler Angus

Mark & Laurie Gaugler
PO Box 195
Judith Gap, MT 59453
mdgaugler@hotmail.com
pgaugler@hotmail.com
(406) 690-1546
www.GauglerAngus.com

Genetic Connection

Loren Brubaker
849 No Way Lane
Stevensville, MT 59870
(406) 777-3503 • (400) 360-1246

Gibbs Angus Ranch

Tim Gibbs
738 Road 130
Fallon, MT 59326
(406) 486-5608

Giem Angus

Gary Giem
82 Giem Lane
Twin Bridges, MT 59754
giem@3rivers.net
(406) 684-5767 • (406) 596-0920

Gnerer Angus

Chris Gnerer
5 Skinner Gulch Lane
Volborg, MT 59351
Krista.gnerer@hotmail.com
(406) 427-5293 • (406) 853-2961
www.GnererAngus.com
See ad on page 79

Gnerer Angus Ranch

Joe Gnerer
10 Ash Creek Rd.
Olive, MT 59343
rjgnerer@gmail.com
(406) 498-6113
www.GnererAngus.com
See ad on page 79

Godley Angus Ranch

Gary Godley
PO Box 304
Kaycee, WY 82639
godley@rtconnect.net
(307) 267-2683
www.GodleyAngus.com

Goggins, Joe & Linda

See MT Angus Female Bonanza

Golden, Greg

See Cole Creek Angus Ranch

Gollaher Ranch Company

Ted & Delight Gollaher
3112 Cascade Hound Creek Road
Cascade, MT 59421
gollaherranch@yahoo.com
(406) 468-2273
www.GollaherRanch.com
See ad on page 78

Graham, Les

See MT Assn of Livestock Auctions

Granger Angus

Jim Granger
1929 Eden Road
Great Falls, MT 59405
blackcow@3rivers.net
(406) 736-5588
www.GrangerAngus.com

Gravenhof, Stacey & Michelle

See West Wind Angus Ranch

Green Mountain Angus Ranch

Tim Todd
35 Green Mountain Dr. • Ryegate, MT 59074
gmar@midrivers.com
(406) 568-2768 • (406) 220-1975
www.GreenMountainAngus.com
See ad on page 1

Green Ranch

RTE 1, Box 1051B
Hardin, MT 59034
(406) 647-2274

Griffin Land and Cattle Co LLC

PO Box 2137
Billings, MT 59103

H

H C Cattle

John Carrel
PO Box 1450
Columbus, MT 59019
lauriecarrel@live.com
(406) 855-2832
www.PineCoulee.com
See ad on page 7

Hachigian-Gould, Greg Gould & Aimee

See 7 Bar Heart Registered Angus

Hansen Registered Angus

Rick Hansen
4314 Road 1007
Froid, MT 59226
2rhansen@nemont.net
(406) 963-7239
www.HansenRegisteredAngus.com

Harmon Angus Ranch

Steve Harmon
PO Box 25
Lavina, MT 59046
harmonangus@gmail.com
(406) 636-4754
www.HarmonAngusRanch.com

Harrer, Bill

3000 11th Ave S, Apt 118
Great Falls, MT 59405
(406) 771-8229

Harrer's Lost Lake Ranch

Deanna Harrer
137 Eden Road, Great Falls, MT 59405
2982 Harrer Rd., Fort Benton, MT 59442
(406) 737-4336
Jeff Schule, Manager
(406) 737-4315
www.HarrersLostLakeRanch.com

Hawley Ranch

Wade Hawley
2790 Erickson Road
Conrad, MT 59425
hawleyranch39@gmail.com
(406) 590-5569
www.HRMineralOwnerConsulting.com

Heart S Livestock Marketing, LLC

Fred & Jennifer Saunders
PO Box 117
Grass Range, MT 59032
fredsaunders9@gmail.com
(406) 428-2334 • (406) 798-9331

Heide Angus Ranch

John & Nancy Heide
59 Upper Valley Road
Boulder, MT 59632
(406) 225-3640 • (406) 439-7129

Heiken Angus

Brian Heiken
15646 Buffalo Trail
Broadview, MT 59015
heikenangus@aol.com
(406) 861-3151
www.JCHeikenAngusandSons.com
See ad on page 43

Ridin for the Brand

51st PRODUCTION SALE

MARCH 5, 2024

1:00 PM MST • At the ranch • Valier, Montana

7 Generations of
Angus Cattle In Big Sky Country

Shipwheel Rainmaker 0538



Reg: *20003132

Additional Featured Sires:

- Apex Frontman 316 • Apex Courage 098
- WMR Ideal H30 • Math Black Rifle 5099
- Musgrave Redemption • Sterling Pacific 904
- Connealy Liberty 837A

Selling:

- Performance Proven Yearling Sons
- Solid Foundation Yearling Heifers
 - Bangs Vaccinated
 - Ready to Breed

Myers Fair-N-Square M39



Reg: *19418329

Settle For More

Apex Angus remains dedicated to producing seed stock that will enhance the commercial cattlemen from "birth" to "plate".

The bulls and heifers offered on 3/5/2024 will keep on doing for you what they've done for years at APEX ANGUS, an honest and trustworthy job.

Apex Value Added:

- Free delivery - Montana & adjoining states.
- 1st year breeding guarantee
- Volume discounts

APEX Angus

THE SWANSON FAMILIES

Kurt	406-279-3341
Kirby	406-472-3245
Connor	406-279-3777
Daryle & Pam	406-279-3548

www.apexangus.com • apex@3rivers.net

High Meadows

Goz Segars
349 Rehder Rd.
Roundup, MT 59072
(843) 332-2537

Hilda Mordhorst, Jim Bumgarner

See Bumgarner Angus

Hildebrand, Lynn & Jan

See Prairie Angus LLC

Hilltop Angus Ranch

Cory Poser
1831 Everson Road • Denton, MT 59430
htangus@itstriangle.com
(406) 366-3461 • www.hilltopangus.com
Gary Poser: (406) 366-4049
See ad on page 73

Hinman Angus

Dave & Yvonne Hinman
PO Box 220 • Malta, MT 59538
hinmanangus@hotmail.com
(406) 654-1809 • (406) 654-4656
www.HinmanAngus.com
Billy and Heidi Lulluff: (406) 654-4669
See ad on page 22

Hoerner, Brandon

See 3Y Bar Cattle Co.

Hofeldt, Clayton

See Bar 9 Ranch

Hofeldt, Dale

See DH Registered Angus

Hoffman Angus Co.

Brad Hoffman
PO Box 130
Custer, MT 59024
hoffman@midrivers.com
(406) 671-7451

Hoines, Chris

See Rock Creek Ranch Ltd. Partnership

Horse Butte Ranch

Dennis & Erica Voss
Po Box 297
Two Dot, MT 59085
hbr@mtintouch.net
(406) 632-4251
www.HorsebutteRanch.com

Hollow Top Angus

Porter Bennett
PO Box 456
Ennis, MT 59729
pbennett@hollowtopangus.com
(303) 513-9058
Clay Clarke: (406) 223-5078
cclarke@hollowtopangus.com
www.HollowTopAngus.com
Jessi Fanelli: (406) 552-0491
jfanelli@hollowtopangus.com
See ad on page 44-45

Hould, Bruce

See B & L Farm & Ranch LLP

Horse Prairie Ranch

Jonathan Jonas
650 Dundee Rd. Suite 380
Northbrook, IL 60062
jjonas@jvcmanagement.com
(847) 960-3840
Urs: uschmidlin@jvcmanagement.com

Houtzel, Royce

See Milk River Genetics

Humbert Angus

Lee Humbert
332 Halverson Rd.
Scobey, MT 59263
2leehumb@nemont.net
(406) 783-5341

46 YEARS
Indreland Angus
Big Timber, MT

BULLS RAISED ON FORAGE ONLY!

OUR COWHERD LIVES ON GRASS ALL YEAR AND WINTERS ON VERY LITTLE OR NO HAY.

WE LET THE ENVIRONMENT SORT OUR CATTLE, NOT EPDS.

INDRELAND ANGUS

REGENERATIVE GRAZING GENETICS

ANNUAL BULL SALE

DEC 4, 2023

80+ 18 MONTH OLD BULLS

100 BRED FEMALES INCLUDING CHOICE OF BRED HEIFERS

CALL FOR MORE INFORMATION

FRONTIER Live Sale

Sale broadcast on:
www.frontierlivesale.com

Request a sale book:
INDRELAND ANGUS
ROGER AND BETSY INDRELAND
170 Glasston Rd • Big Timber, MT
406-932-4232 or 1-866-901-BEEF
iaranch@itstriangle.com

Visit us online
WWW.INDRELANDRANCH.COM

SALE SCHEDULE

DEC. 2-3
VIEW CATTLE

DEC. 4
VIEW CATTLE, ONLINE OR ON-SITE BIDDING
LOTS START CLOSING AT 1:00 PM

LUNCH SERVED EACH DAY.

selling

120 HEAD OF YEARLING + 2 YEAR OLD BULLS

ALL BULLS ARE FREEZE BRANDED, BVD TESTED, AND BREEDING SOUNDNESS/FERTILITY EXAM

FULL CALENDAR YEAR GUARANTEE

OX BOW RANCH

OX BOW RANCH SPRING SALE

WEDNESDAY | MARCH 6TH | 1:00 PM

AT THE RANCH IN WOLF CREEK, MONTANA - LUNCH AT NOON

BULLS ARE RAISED IN A RUGGED, STEEP ENVIRONMENT
WITHOUT CREEP, IRRIGATED PASTURES AND FOOT TRIMMING. PERFORMING

Performing from Montana, The Dakotas, to the Great Basin & the Mexican Border



2023-2024 Directory



OXBOWRANCHANGUS.COM

Hunt Creek Angus

Lowell Peterson
 244 N. Silver Tip Road
 Bridger, MT 59014 • (406) 425-2006
 huntcreekangus@gmail.com
 Grant Peterson: (406) 698-5077
 Clint Peterson: (406) 426-8799
 Sonya Peterson: (406) 697-4887

I

Indreland Angus

Roger & Betsy Indreland
 170 Glasston Road
 Big Timber, MT 59011
 iaranch@itstriangle.com • (406) 932-4232
 www.IndrelandRanch.com
See ad on page 56

Infinity Angus Ranch

Edwin Miner
 211 Prairie Dell Road
 Peerless, MT 59253
 infinityangus@nemont.net
 (406) 893-7788
 www.InfinityAngus.com

J

J & K Heiken Angus

John & Kendra Heiken
 P.O. Box 32
 Broadview, MT 59015
 jcheikenangus@gmail.com
 (406) 855-7839
 www.JCheikenAndSons.com
See ad on page 43

J L Farms Inc.

Darryl & Kari Wagner
 3752 Little Creek Lane, RR 9
 Billings, MT 59101
 jl.wags@hotmail.com
 (406) 628-3534 • (406) 670-9619
 Jena Lee Wagner: (406) 670-9618
 Jordyn Lynn Wagner: (406) 672-5553

J.P. Genetics

Gary Porter
 3360 Heeb Road
 Manhattan, MT 59741
 (406) 282-7487

Jacobs, Roger & Sandy

See Summit Angus Ranch

JC Heiken Angus & Sons

John Heiken
 PO Box 32
 Broadview, MT 59015
 jkheiken@itstriangle.com
 Joe: (406) 861-1020
 John: (406) 855-7839
 www.JCheikenAngusAndSons.com
See ad on page 43

Jensen, Bill

See Black Pine Farm

Jocko Valley Cattle

Marvin Rehbein
 32526 McLeod Road
 Arlee, MT 59821
 cabordner@riversidecontracting.com
 (406) 726-3839 • (406) 546-4687
 www.JockoValleyCattle.com

Johnson, Ben or Karli

See Sevens Livestock Co.

SEEK THE BALANCE



Sitz Resilient 10208
 #19057457
 BW: .3 WW: 75 YW: 130 M: 20
 MB: .88 RE: .71



B Bar Black Mass 3045
 #18137165
 BW: -1.9 WW: 44 YW: 78 M: 31
 MB: .20 RE: .74



SAV Resource 1441
 #17016597
 BW: 4.0 WW: 69 YW: 131 M: 17
 MB: -.10 RE: 1.08

ANNUAL BULL SALE

MARCH 23, 2024

Selling 90 Bulls
 The Bull Palace • Baker, MT

OTHER SIRES INCLUDE:
 B Bar Power Mass 9231 • AAR Stunner J150

Milk
 Growth
 Disposition
 Birth Weight
 Reproduction

Find us on
 Facebook &
 Instagram!




LUND'S B BAR ANGUS RANCH

301 E. Carlyle Rd. • Wibaux, MT 59353 • www.lundsbbarangus.com
 Steve: 406-588-3631 • Ethel: 406-588-3771 • Rob: 406-588-3000



33rd Annual

ANGUS BULL SALE

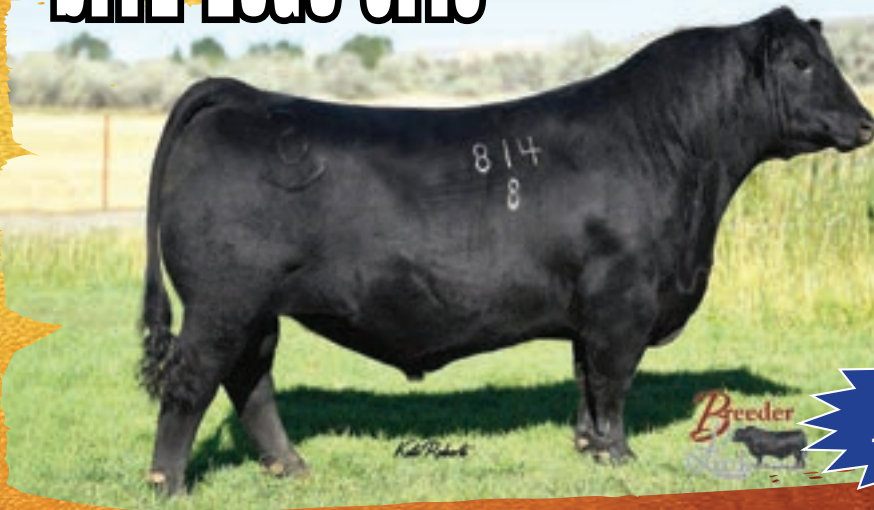
MARCH 7TH, 2024 • 1:00 P.M. MST

DILLON LIVESTOCK AUCTION • DILLON, MT

Featuring Sons From...

SITZ LOGO 8148

AAA #19087441



CED	+8
BW	+2
WW	+84
YW	+143
HP	+18.1
\$M	+88
\$W	+78

**Top 10%
PAP, CLAW
Top 30% ANGLE**

And Introducing Our Newest Herd Sires!

SITZ THRESHOLD 9901

AAA #20043616



**Great Footed!
Explosive Growth!
Moderate Calving
Ease!**

SITZ RESILIENT 1299

AAA #20117643



**Calving Ease
with Great
Feet & PAP!**

SEMEN AVAILABLE ON LOGO, THRESHOLD, & RESILIENT!

**Steve & Linda Buckner | 406-498-3005 | steve@splitdiamond.com
Hans & Diana Buckner | 406-581-0612 | hans@splitdiamond.com**



PAP Tested <=> Fertility Tested <=> Maternally Minded <=> Range Functional <=> Easier Calving



APRIL 26TH 2024
Lunch at Noon
Sale at 1:00
 Bowman Auction Market, Bowman ND



Selling 85 head of bulls
 45 head of commercial heifers

Featuring sons of
 Kphu 4055 | Med Rock Beaver Creek 628
 B Bar Blackmess 4907 | ZWT Summit 6507
 Paramount Ambush 272 | Sitz Reload 411C

If your cow herd is the heart of your program, be sure to look at our herd to find your next sire battery. With a no excuses approach to culling we offer great feet, udder, and test structure along with good disposition. Our cows are expected to work for us, not the other way around.

Frank and Charlene Mehling
 406-775-6478
 1021 Hwy 7, Baker MT 59313

Spring Angus
 406-740-0523
 70 Chalk Buttes, Ekalaka MT 59324

Check us out online at
 MedicineRocksRanch.com

Johnson, Leisa & Brady

See Basin Angus

Jonas, Jonathan

See Horse Prairie Ranch

Jones Creek Ranch

Casey Kombol

PO Box 818

Roundup, MT 59072-0818

jones_creek_ranch@hotmail.com

(406) 331-0696

Boka, Josh Kevin Peterson

See Mountainview Insurance

K

KEL MCC Angus

Kelly McCracken

32215 Hogeland Rd.

Turner, MT 59542

kelmccan@itstriangle.com

(406) 262-2347

Keller, Mark & Lynn

See MLK Angus

KG Ranch

Paul Doddridge

110 KG Ranch Road

Three Forks, MT 59752

paul@kgranch.com

(406) 285-3660

www.KGRanch.com

See ad on page 17

Kiker, John

See Montana Angus Ranch

Kimm Angus

Tom Kimm

8620 Highline Road

Manhattan, MT 59741

tdkimm@gmail.com

(406) 209-2653

Riley Kimm: (406) 580-6172

Kirby, Mike

See Shooting Arrow Cattle

Klick Angus

Todd Klick

PO Box 176

Simms, MT 59477

jtklick@icloud.com

(406) 899-5806

Kolb Angus Ranch

Ron Kolb

29 Kolb Rd.

Hysham, MT 59038

gandr13@gmail.com

(406) 855-3259

Kombol, Casey

See Jones Creek Ranch

Krantz Angus

Clark, Adele & Carter Krantz

835 Fairmont Road

Kalispell, MT 59901

3kidfarm@centurytel.net

Clark: (406) 250-1081

Carter: (406) 212-5499

L

L K Bar Angus Ranch

Larry Krein

36351 Dublin Gulch Road

St. Ignatius, MT 59865

chr2801@blackfoot.net

(406) 253-5692

Lamey, Cory

See Circle L Angus

Larsen Ranch

Tyler Larsen

249 Rosebud Creek Rd.

Forsyth, MT 59327

larsenranch@rangeweb.net

(406) 351-1412

Lafe: (406) 351-9828

www.LarsenRanch.com

Lawson, Ben

3955 Evelyn Ave.

Rocklin, CA 95677

bovagene@msn.com

(307) 340-0488

www.Bovagene.com

Lazy Bar B Ranch

Dick Britzman

PO Box 52

Glasgow, MT 59230

richardbritzman@yahoo.com

(406) 263-7522

John: (406) 263-1147

Lazy JM Ranch

Kurt McPherson

35625 Hawkins Rd.

St. Ignatius, MT 59865

flint@blackfoot.net

(406) 239-7640

TH Legacy



High Selling Bull in our 2023 sale to KG Ranch



Maternally Driven
Genetics



6th Annual Production Sale

Saturday • March 9, 2024

1 pm | Headwaters Livestock Auction Yards | Three Forks, MT

Sitz Resilient 10208



Pine Coulee Resource 9708



TH Gunsmoke 255



Rick 406-581-2078

85 Lone Mountain Rd • Toston, MT 59643

ThousandHillsAngus.com

Leachman Angus Ranch

Marlo Leachman
202 Muddy Lane Rd.
Toston, MT 59643
leachman@mt.net
(406) 581-0531
www.LeachmanAngus.com

Lee, Cody

See Never Sweat Ranch

Les Craft Angus

Les Craft
981 Shane Creek Rd.
Columbus, MT 59019
craft.y@comcast.net
(406) 322-6158 • (219) 716-6624

Lesnik Angus

John Lesnik
690 Nye Rd.
Fishtail, MT 59028
j-lesnik@hotmail.com
(406) 925-3968

Lippert Livestock

Keith Lippert
5341 Carter Rd. West
Carter, MT 59420
ckl@3rivers.net
(406) 799-1494

LJ Angus

Jeff & Laurie Mosher Family
6410 Frey Road
Shepherd, MT 59079
(406) 373-5961

Lori Peterson, Wendy Olson &

See Stein Angus

Louie Petrie Ranch

Sam & Linda Obrecht
Tyrel & Lindsey Obrecht
PO Box 77
Turner, MT 59542
samobrecht82@gmail.com
(406) 379-2392 • (406) 379-2221

Lund, JR & Katie

See Rockin L Genetics

Lund's B Bar Angus Ranch

Steve Lund
491 E. Carlyle Road
Wibaux, MT 59353
lundbbar@midrivers.com
(406) 588-3631
www.LundsBBarAngus.com
See ad on page 58

M**M & M Angus Ranch**

Jeff Michael
3731 Pioneer Road
Billings, MT 59105
mandmangusranch@gmail.com
(406) 670-7964

Malcolm Mile-Hi Ranch

Asha Malcolm
28 Cokedale Rd.
Livingston, MT 59047
malcolmmilehiranch@gmail.com
(406) 223-1657
Will Malcolm:(406) 223-2234

Malcolm, Will & Sabrina

See Sleeping Giant Genetics

Maloney Angus & Simental

Garrett or Gavin Maloney
P.O. Box 24
Turner, MT 59542
masranch@outlook.com
(406) 654-7115
www.MaloneyAngusSimmental.com



Don't Gamble With *Breeding Season*
MLS Tubs Are A Sure Bet




MLStubs.com
info@mlstubs.com

Your MLS Expert
Emily Bendish: 701-471-3067



MOUNTAINVIEW INSURANCE

FARM & RANCH

WORK COMP - ANIMAL MORTALITY - RAINFALL



Kevin Peterson
Commercial Ag Producer
Kevin@MontanaInsurance.net



Josh Boka
Commercial Ag Producer
Josh@MontanaInsurance.net

PROVIDING TRUSTED RISK MANAGEMENT

406-683-6881 | 202 Willow St | Dillon, MT 59725

Mangan Angus Ranch

Dick Mangan & Family
11400 Kona Ranch Road
Missoula, MT 59804
blackbull@bigsky.net
(406) 543-0013

Mapston, Wes

See Double Horseshoe Ranch

Mason, Doug & Jody

See North Bench Livestock

Math Farms Angus

Robert & Cody Math
11096 N Forks Road
Whitewater, MT 59544
rmathfarms@yahoo.com
math5@itstriangle.com
(406) 674-5562 • (406) 672-2323
(406) 671-1949
www.MathFarms.com
See ad on page 75

McCracken, Kelly

See KEL MCC Angus

McDonnell Angus

Leo & Sam McDonnell
70 Sheep Dip Rd.
Columbus, MT 59019
leomcd@hotmail.com
(406) 780-0176 • (406) 321-0655
www.McDonnellBeefCountry.com
See ad on page 12

McDonough Angus Ranch

Rob McDonough
5545 Lewis & Clark Pass Road
Wolf Creek, MT 59648
rmcdona628@yahoo.com
(406) 235-4428

McKamey Ranch Co.

Ken McKamey
1909 Millegan Road
Great Falls, MT 59405
kpmck.mt@gmail.com
(406) 866-3471

McNamee Angus Ranch

Jack McNamee
344 Road 538
Miles City, MT 59301
(406) 421-5588
(406) 853-3835
www.McNameeAngusRanch.com

McPherson, Kurt

See Lazy JM Ranch

McRae, Brent and Jack

See Big Dry Angus Ranch

Medicine Rocks Ranch

Frank & Charlene Mehling
1021 Hwy. 7
Baker, MT 59313
medicine_rocks_ranch@hotmail.com
(406) 775-6478
www.MedicineRocksRanch.com
Paul & Michelle Mehling: (218) 329-6088
See ad on page 60

Meged, Haven

696 Tongue River Rd.
Miles City, MT 59301
(406) 951-3004

Mehling, Frank & Charlene

See Medicine Rocks Ranch

Menghini Angus Ranch

Clint Menghini
116 Holmber Road
Belt, MT 59412
cmenghini@3rivers.net
(406) 736-5600

Menghini Angus Ranch

Duane & Shirley Menghini
116 Holmberg Road
Belt, MT 59412
menghini@3rivers.net
(406) 788-1671
(406) 736-5279

Michael, Jeff

See M & M Angus Ranch

Middlemist Cattle

Kyle Middlemist
38731 Green Mountain Road
Polson, MT 59860
kylemiddlemist@gmail.com
(406) 396-4282

Midland Bull Test

Williams & McDonnell families
5 Bull Drive
Columbus, MT 59019
bulls@midlandbulltest.com
(406) 322-5597
www.MidlandBullTest.com
See ad on page 69

Mikesell, John

See Saddle Mountain Angus Ranch

Miklovich, Carter

See Sioux Pass Angus



Cattle Promotion
Printing & Mailing Services
Graphic & Web Design
Embroidery & Promo Products

Hannah Norskog, Owner \ Stanford, MT
hannah@montanagrafix.com \ 406-399-7763

For over *four* decades, our *family* has *focused*
on building a *foundation* with a *functional* cowherd.

Add *efficient*
functionality
to your herd!



SITZ RESILIENT 10208 *19057457
CED BW WW YW SC M MARB REA \$B
+9 +0.3 +75 +130 +0.91 +20 +0.88 +0.71 +139



SITZ REWARD 12220 *19660492
CED BW WW YW SC M MARB REA \$B
+7 +1.3 +81 +152 +1.75 +24 +0.22 +0.56 +133



COOK BOMBER 926G *19549744
CED BW WW YW SC M MARB REA \$B
+17 -2.1 +58 +104 +0.55 +35 +0.70 +0.56 +143



STERLING BOND 007 *19823211
CED BW WW YW SC M MARB REA \$B
+5 +1.7 +82 +150 +0.96 +22 +0.95 +1.22 +190

Visitors
Welcome!

Annual Production Sale

Tuesday, March 26, 2024

1 p.m. MDT :: Bar JV Sale Barn :: North of Sidney, MT

Selling: 100 :: Angus Bulls
150 :: Commercial
Heifers



Contact us for a sale book
or to view the bulls.



BAR JV ANGUS

Dale & Jill Vitt :: (406) 798-3398 :: (406) 480-5676 cell
Jim & Loretta Vitt :: (406) 798-3653 :: (406) 630-2959 cell
www.barjv Angus.com :: 14013 Cty Rd 340 :: Fairview, MT 59221



Milk River Genetics

Royce Houtzel
13765 Peoples Creek Rd.
Chinook, MT 59523
mrg@itstriangle.com
(406) 945-3261
www.MilkRiverGenetics.com

Millar, Jim

See Sarpy Creek Angus Ranch

Miner, Edwin

See Infinity Angus Ranch

Miske Ranch Angus

Robert Miske
PO Box 59
Wibaux, MT 59353
mrangus@midrivers.com
(406) 796-8102
(701) 218-0441

MLK Angus

Mark & Lynn Keller
2828 Lincoln Road E
Helena, MT 59602
mlkangus@outlook.com
(406) 431-0872
www.MLKAngus.net
Lynn Keller: (406) 465-8195

Montana Angus Association

Jesse Thompson
PO Box 25
Whitlash, MT 59545
(406) 450-3429
montanaangusnews@mtangus.org
www.MTAngus.org

Montana Angus Ranch

John Kiker
855 Abutment Rd., Suite 5
Dalton, GA 30721
johnkiker@optilink.us
(706) 259-5627 • (706) 264-0433

Montana Grafix, LLC

Hannah Norskog
PO Box 544
Stanford, MT 59479
hannah@montanagrafix.com
(406) 399-7763
www.MontanaGrafix.com
See ad on page 64

Montana Ranch, LLC

David Brown
1463 Hwy 83
Big Fork, MT 59911
bulls@montanaranchangus.com
(406) 210-5605
www.MontanaRanchAngus.com

Mosher Family, Jeff & Laurie

See LJ Angus

Motichka, Trevor

See FF Ranch

Mountainview Insurance

Kevin Peterson, Josh Boka
202 Willow Street
Dillon, MT 59725
kevin@montanainsurance.net
josh@montanainsurance.net
(406) 683-6881
www.MontanaInsurance.net
See ad on page 63

MT Angus Female Bonanza

Joe & Linda Goggins
4935 Powmer Road
Billings, MT 59105
(406) 373-6844 • (406) 861-5664
See ad on page 52

MT Assn. of Livestock Auctions

Les Graham
56 Poplar Drive
Bozeman, MT 59718
ldgraham74@gmail.com
(406) 580-2919



Nutra-Lix Liquid is an innovative formulation geared to forward-thinking cattlemen. With no waste, no storage fees, no delivery costs, no wear-and-tear on vehicles, and better herd health, Nutra-Lix teams up with today's producers to create **Effective** and **Efficient** feeding... **And THAT is Essential for Profits!**



call your Nutra-Lix Dealer or:

800.568.6952

www.NutraLix.com

Nutra-Lix - It's at Home on YOUR Range!

A Proud Tradition since 1987



PGC PETERSON GRAIN & CATTLE

Registered Angus Seedstock
Ranch & Development Lot • 18211 Rd 325 N, Havre MT
Sale Facility • 32116 Rd 230 N, Havre MT

March 27, 2024

Sitz Stellar 726D • Woodhill Blueprint • Square B True North 8052
PGC Forge • PGC Authentic • Circle L Boone • Myers Fair N Square

Andee 406.945.2717 • Kim 406.945.0544 • Casey 406.945.1355

PETERSONGRAINANDCATTLE.COM

Murphy Angus

Brad J. Murphy
PO Box 55
Winnett, MT 59087
bmurphyangus@gmail.com
(406) 539-7041
Brynn Murphy: (406) 799-3358

Murray, Chase

See Universal Semen Sales

Mussard, Bryan

See Reminisce Angus Ranch

Mydland Angus Ranch

Danny & Corie Mydland
645 Farewell
Joliet, MT 59041
dcmydland@aol.com
(406) 962-3404
www.MydlandAngus.com

N**Neal Ranch**

Lyle & Dianna Neal
10981 Hwy 451
Lodge Grass, MT 59050
neal@nemont.net
(406) 639-2505 • (406) 679-1976
Ty & Perrie Neal : (406) 638-2527

Never Sweat Ranch

Cody Lee
1025 Hwy. 93 S
Hamilton, MT 59840
codyleeus@yahoo.com
ashleymlee2019@gmail.com
(406) 370-7623
www.NeverSweatRanch.com

NILE Stock Show & Pro Rodeo

Leah Clark
PO Box 1981
Billings, MT 59103
leah@thenile.org
(406) 256-2498
www.TheNILE.org

Nissen Angus

Jeff & Christie Nissen
14615 Paradise Valley Rd
Chinook, MT 59523
info@nissenangus.com
(406) 357-2643
www.NissenAngus.com

Norskog, Hannah

See Montana Grafix, LLC

North Bench Livestock

Doug & Jody Mason
153 E Fossum Rd
Richland, MT 59260
northbenchlivestock@gmail.com
(406) 724-3322
(406) 853-5130
www.NorthBenchLivestock.com

Northern Ag Network

Colter Brown
PO Box 1742
Billings, MT 59103
colter@northernbroadcasting.com
(406) 252-6661
(406) 850-1151
www.NorthernAg.net
See ad on page 9

Nueta Cattle Co.

Shawn Fredericks
HC 42; Box 692
Busby, MT 59016
nuetacattle@outlook.com
(406) 679-0013
www.NuetaCattle.com

O**O'Connor, Harrison**

See Saddle Butte Ranch

OA Angus

Pete Olind
368 Shining Mtns. Loop Rd.
Ennis, MT 59729
oaangus@hotmail.com
(406) 682-3304 • (406) 548-5326

Obrecht, Sam, Linda, Tyrel, Lindsay

See Louie Petrie Ranch

Odegard, Aaron

See First West Insurance

Olind, Pete

See OA Angus

Orem, Marc

See Ox Bow Ranch

ORigen Inc.

Dick Beck, Jenna Sidwell
10 West Arrow Creek Road
Huntley, MT 59037 • (406) 348-2345
brookev@origen-beef.com
www.ORigenBeef.org
See ad on page 76



Conventional Flush & IVF Services
Embryo Sexing • Embryonic Genomics
Reverse Sort Semen
Pregnant Recips • Weaned Calves

Mark & Jeanne Reyher • 406-580-3490
Austin Reyher • 406-599-6836
7195 Thorpe Road, Belgrade, MT 59714
reyherembryonics@aol.com 

MIDLAND BULL TEST

Our bulls stand on a Mountain of Data

MIDLAND BULL TEST offers commercial cattlemen and seedstock producers a unique opportunity to select top end bulls from around the country. Our test criteria is formulated with the success of the commercial cattleman at the forefront. We gather individual results and provide more proven information than anyone in the business. The Final Sort sale is your opportunity to select from one of the best bull lineups, you don't want to miss this sale!

FIND INFO AT: www.MidlandBullTest.com

RECEIVING DATES

SEPT 13-23, 2023

GROUP 1 - 1/2 Spring-Born Angus Bulls

ALL FALL BULLS - Charolais, Chiangus, Gelbvieh, Hereford, Red Angus, Salers, Simmental, South Devon, Wagyu and Additional Breeds

RECEIVING DATES

OCT 11-21, 2023

GROUP 2 - 1/2 Spring-Born Angus Bulls

ALL SPRING BULLS - Charolais, Chiangus, Gelbvieh, Hereford, Red Angus, Salers, Simmental, South Devon, Wagyu and Additional Breeds

Join us for the

FINAL SORT

BULL SALE

APRIL 4, 2024

APRIL 5, 2024

We are America's largest source of EFFICIENCY TESTED bulls.

April 4

Charolais
Chiangus
Gelbvieh
Hereford
Salers
Simmental
South Devon
Red Angus
Wagyu

April 5

Angus



STEVE & AMY WILLIAMS

5 Bull Drive
Columbus, MT 59019

Cell: (406) 321-7046
Office: (406) 322-5597

E-mail: bulls@midlandbulltest.com
Text or e-mail for a catalog!

Ostrum, Chase
See 2 Bar Livestock

Ox Bow Ranch

Marc Orem
PO Box 215
Wolf Creek, MT 59648
oxbow1725@gmail.com
(406) 235-4281
www.OxbowRanchAngus.com
See ad on page 57

P

Pass Creek Angus

Darrell Rathkamp
PO Box 148
Wyola, MT 59089
passcreekangus@hotmail.com
(406) 343-2551
www.PassCreekRanch.com

Patterson, John

See 3210 Angus

Paulsen Land Corp

PO Box 995
Chinook, MT 59523
paulsnld@itstriangle.com
(406) 357-3403

Perry, Ryan & Karnell
See R K Perry, Treasure Bull Test

Peterson Angus

Randy Peterson
PO Box 427
Drummond, MT 59832
speterson5897@gmail.com
(406) 240-5897

Peterson Grain & Cattle

Andee Peterson
32116 Road 230 N.
Havre, MT 59501
andreebrook@gmail.com
(406) 945-2717
www.PetersonGrainAndCattle.com
See ad on page 67

Peterson Grain & Cattle

Casey & Chancin Solomon
18211 Road 325 N
Havre, MT 59501
pgc@itstriangle.com
(406) 945-1355
www.PetersonGrainAndCattle.com
See ad on page 67

Peterson Grain & Cattle, Inc.

Kim Peterson
18211 Road 325 N
Havre, MT 59501
pgc@itstriangle.com
(406) 945-0544
www.PetersonGrainAndCattle.com
See ad on page 67

Peterson, Jay & Lea

See Six Diamond Angus

Peterson, Kevin

See Mountainview Insurance

Peterson, Kim

See Peterson Grain & Cattle, Inc.

Peterson, Lowell

See Hunt Creek Angus

Peterson, Randy

See Peterson Angus

Piazzola Angus Ranch

Jerry Piazzola
498 Basin Creek Road
Butte, MT 59701
Jerry.Piazzola@gmail.com
(406) 310-0151

HMA
W. Anne Grubbs

Join us on
12.13.23
at the Ranch near Chinook, MT

Your source for *sound*, athletic, thick-made bulls that will sire females with extra do-ability and *longevity*.

SHIPWHEEL CATTLE COMPANY
CHINOOK MONTANA

www.shipwheelcattle.com
f i

Offering sons by
Shipwheel Dreamer 8522, Basin Rainmaker 4404, U2 Coalition,
Shipwheel Essential, Duff Real Deal, Fairview Pacesetter, Connealy Packer

Swanson family
Klint & Lori
Austin & Bree
(406) 357-2492
lori@shipwheelcattle.com

Open camera.
Tap the code.
View the website!

C SPEAR ANGUS

Fourth Annual
Production Sale



**SELLING 85
ANGUS BULLS**

**PERFORMANCE MINDED...
BECAUSE POUNDS PAY.**

Monday **APRIL 8** 2024
1:00 PM MT || Billings Livestock Commission || Billings, MT



COOK ANGUS
Bill & Codi Cook
Huntley, MT
406-670-0689 || cookbill44@gmail.com

MATT LIVESTOCK
Jess & Lana Matt
Bridger, MT
406-670-6311 || thematts@brmt.net



Pike, Bryan

30 Heron Bank Rd.
Great Falls, MT 59404
bpik@hotmai.com
(406) 788-5952

Pike, Kent & Judy

See 4 Butte Cattle Co.

Pine Coulee Angus

Jim & Andrea Stampfel
PO Box 772
Absarokee, MT 59001
pinecoulee@outlook.com
(406) 780-1230
www.PineCoulee.com
See ad on page 7

Pleasant Valley Angus

Cory & Sarah Foss
12405 County Rd 343
Sidney, MT 59270
csfoss@hotmail.com
(406) 489-0809

Popescu Angus

George Popescu
PO Box 1508
Fort Benton, MT 59442
(406) 564-2482

Porter, Gary

See J.P. Genetics

Poser, Cory

See Hilltop Angus Ranch

Prairie Angus LLC

Lynn & Jan Hildebrand
420 N. Silvertip Road
Bridger, MT 59014
(406) 664-3221 • (406) 860-3978
(406) 860-0022

R**R K Perry**

Ryan & Karnell Perry
P.O. Box 1
Power, MT 59468
rkperry@icloud.com
(406) 788-9869

Rafter E Angus, LLC

Craig Blevins
P.O. Box 735
Ronan, MT 59864
raftereangus@gmail.com
(406) 207-8339
(406) 207-8339
Michaela Blevins: (406) 207-8482

Rambur Charolais

Howard Rambur
34790 County Road 118
Sdiney, MT 59270
rc1@midrivers.com
(406) 489-3255
www.RamburChar.com

RAN Cattle Company

Ron Sampson
PO Box 278
Twin Bridges, MT 59754
sampsonnikki@yahoo.com
(406) 684-5148

Rathkamp, Darrell

See Pass Creek Angus

Ratzburg, Bryan

See Bobcat Angus

Ravellette Cattle

Don Ravellette
PO Box 633
Philip, SD 57567
don@pioneer-review.com
(605) 685-5147
Tami Ravellette: (605) 441-7346



Annual Production Sale | Monday 1 p.m. **March 18** 2024
at the ranch
14504 Road 6 North
Hingham, Montana

OFFERING SONS OF
Mohnen Prince - TEF Validate - Deer Valley Growth Fund
A A R Load Up J277 - S Wrangler 830

David Sattoriva
406-390-1471 cell 406-397-3386 home

www.whistlingwindsangus.com

Selling 100 Angus Bulls & 100 Replacement Heifers

Annual Production Sale

Tuesday

APRIL 9th 2024

**Lunch at Noon
Sale at 1:00 p.m.**

**3 miles south of
Denton, Montana**



Hilltop 
Angus Ranch
DENTON, MONTANA



RF
RON FRYE | MARKETING
- call or text -
406.600.7514
www.RonFryeMarketing.com

**Contact us
for your
Sale Book!**

**Cory & Tammie Poser 406/ 366-3461
Gary & Carmen Poser 406/ 567-2627
1831 Everson Road • Denton, MT 59430
cory.poser@icloud.com**

www.HilltopAngus.com

Reddin Angus

Jake or Kris Reddin
3096 Old Darby Road
Darby, MT 59829
kjreddin@cybernet1.com
(406) 821-4442

Regency Acres

Russell & Jill Thiessen
33142 CR 117
Lambert, MT 59243
raa@midrivers.com
(406) 480-5988
www.RegencyAcres.com
Tyler Thiessen: (406) 480-1284

Rehbein, Marvin

See Jocko Valley Cattle

Reisig Cattle

David Reisig
PO Box 30
Hardin, MT 59034
dustin@reisigcattle.com
(406) 350-1800
www.ReisigCattle.com

Reisig Cattle

Dustin & Rebecca Reisig
619 NE Main Street
Lewistown, MT 59457
(406) 538-5731
(406) 350-1800
www.ReisigCattle.com

Reminisce Angus Ranch

Bryan Mussard
6101 Sweetwater Road
Dillon, MT 59725
bryanmussard406@gmail.com
(406) 925-1416
www.RemAngus.com
See ad on page 4, 47

Reyher Embryonics

Mark & Jeanne Reyher
7195 Thorpe Road
Belgrade, MT 59714
reyherembryonics@aol.com
(406) 580-3490
See ad on page 68

Rice Ranches, Inc.

Diane Rice
PO Box 216
Harrison, MT 59735
info@riceranches.com
(406) 685-3468
(406) 580-1447
www.RiceRanches.com

Rice, Greg & Karen

See Spanish Q Inc.

Rising Ranch

Wyatt or Pete or Morgan Rising
134 Ash Creek Road
Wibaux, MT 59353
a7ranch@gmail.com
Wyatt: (406) 941-0430

Rock Creek Ranch Ltd. Partnership

Chris Hoines
5112 Diamond Falls Rd
Billings, MT 59106
choinesse@paynewest.com
(406) 672-1987

Rockin L Genetics

JR & Katie Lund
PO Box 42
Winnett, MT 59087
rockinLgenetics@hotmail.com
lundangus@hotmail.com
(406) 350-1059
(406) 951-0212

Winding River
ANGUS
Private Treaty Opening Day
Saturday, March 16, 2024
Bridger, MT, 4 miles south on Hwy 72

SIRES REPRESENTED
Thedford
Man In Black
Iron Horse
Resilient
Crackerjack
Value Added
Movin On
Party Top

WELCOME TO OUR DISPLAY AT THE GROUP TOUR LUNCH STOP AT MIDLAND BULL TEST ON THUR., SEPT. 21.

LOOK FOR OUR BULLS AT MIDLAND BULL TEST!

FEMALES FOR SALE PRIVATE TREATY!

LOUIS & KATHY DUBS & FAMILY
4910 Custer • Billings, MT 59106 • www.WindingRiverAngus.com
(406) 652-7515 • (406) 208-8643 • windingriverangus@gmail.com



Breeding registered Angus cattle for over 35 years

ANNUAL PRODUCTION SALE SATURDAY APRIL 13TH, 2024

Featuring Sons of Sitz Barricade, SAV Double Wide, GDAR Load Up, PGC Latitude 49 & Woodhill Agenda

MATHFARMS.COM

Cody Math (406) 671-1949 Bob Math (406) 674-5562 cody@mathfarms.com

Rollin' Rock Angus

Jennifer Davis
7111 Sherman Dr
Belgrade, MT 59714
rolnrokDavis@gmail.com
(406) 489-2609
www.RollinRockAngus.com
Ryan Raymond: (541) 96-9409
See ad on page 13

Rule, Ronald

See Fish Creek Ranch

Ryan, Tom

See Shinbone Ranch Co. LLC

S

Saddle Butte Ranch

Harrison O'Connor
2704 Cottonwood Creek Road
Geyser, MT 59447
saddleb@3rivers.net
(406) 735-4400
www.SaddleButteRanch.com
See ad on page 81

Saddle Mountain Angus Ranch

John Mikesell
7987 Hwy. 93 S
Sula, MT 59871
jmikesell@hotmail.com
(406) 821-3433
(406) 381-0297

Sampson, Ron

See RAN Cattle Company

Sand Rock Angus

Bob Smith
222 Sand Rock Rd.
Broadus, MT 59317
bsmith@sandrockangus.com
(406) 427-5745
(406) 853-0363
www.SandRockAngus.com

Sarpy Creek Angus Ranch

Jim Millar
697 Sarpy Basin
Hysham, MT 59038
sarpycreekangus@gmail.com
(406) 342-5813

Sattoriva, David

See Whistling Winds Angus, Inc.

Saunders, Fred & Jennifer

See Heart S Livestock Marketing, LLC

Segars, Goz

See High Meadows

Sevens Livestock Co.

Ben or Karli Johnson
PO Box 456
Choteau, MT 59422
sevenslivestock@gmail.com
(406) 480-2953

Severson, Dan & Gene

See Severson's Flying E Ranch

Severson's Flying E Ranch

Dan & Gene Severson
760 S. Burnt Fork Road
Stevensville, MT 59870
lee@familypharmacist.com
(406) 777-3576 • (406) 777-3313
www.SeversonsFlyingE.com

Shinbone Ranch Co. LLC

Tom Ryan
595 Huntley Butte Rd
Absarokee, MT 59001
tomryan@wtp.net
(406) 326-2230



Shipwheel Cattle Co.

Klint & Lori Swanson
 2265 Gooseberry Lane
 Chinook, MT 59523-9005
 lori@shipwheelcattle.com
 (406) 357-2492 • (406) 399-2962
 www.ShipwheelCattle.com

See ad on page 70

Shooting Arrow Cattle

Mike Kirby
 PO Box 117
 Stanford, MT 59479
 (406) 566-2563 • (406) 350-3096

Sidwell, Jenna

See ORigen Inc.

Sioux Pass Angus

Carter Miklovich
 PO Box 512
 Lodge Grass, MT 59050
 siouxpassangus@gmail.com
 406-639-2524
 www.SiouxPassAngus.com

Sitz Angus Ranch

Bob Sitz
 Harrison, MT
 sitzangus@gmail.com
 (406) 683-5277
 www.SitzAngus.com

See ad on page 3

Sitz Angus Ranch

Jim & Tammi Sitz
 9100 US Hwy 91 N
 Dillon, MT 59725
 sitzangus@gmail.com
 (406) 925-9888
 www.SitzAngus.com

See ad on page 3

Six Diamond Angus

Jay & Lea Peterson
 PO Box 907
 Sheridan, MT 59749
 jaynlea@3rivers.net
 (406) 842-7214

Skinner Ranch Seedstock

Kim & Tim Skinner
 162 Farm to Market Rd. W.
 Hall, MT 59837
 skinnerranch@hotmail.com
 Kim: (406) 581-1852
 Tim: (406) 581-6224
 www.SkinnerRanch.com

See ad on page 18-19

Skogen GK Angus Ranch

Orville Skogen
 97 Old Fort Shaw Road
 Fort Shaw, MT 59443
 skogenlivestock@hotmail.com
 (406) 264-5298 or (406) 264-5270

Sleeping Giant Genetics

Will & Sabrina Malcolm
 28 Cokedale Road
 Livingston, MT 59047
 sleepinggiantgenetics@gmail.com
 (406) 223-2234

Smith, Bob

See Sand Rock Angus

Smith, Spencer

See Spencer Smith Farms

Solomon, Casey & Chancin

See Peterson Grain & Cattle

Spanish Q Inc.

Greg & Karen Rice
 PO Box 1530
 Ennis, MT 59729
 spanishq@3rivers.net
 (406) 682-3661

Spencer Smith Farms

Spencer Smith
 5155 High Street
 Belgrade, MT 59714
 (406) 284-6864

Spickard, Scott

See World West Sire Services Inc.

Split Diamond Ranch

Hans & Diana Buckner
 53 Ridder Lane
 Whitehall, MT 59759
 hans@splitdiamond.com
 (406) 581-0612
 www.SplitDiamond.com
 Steve & Linda Buckner: (406) 498-3005

See ad on page 59

SpringVale Ranch

Shawn & Jennifer Christensen
 56835 Little Bitterroot Road
 Hot Springs, MT 59845
 springvale@hotspringsmt.net
 (406) 741-2519

Stampfel, Jim & Andrea

See Pine Coulee Angus

Stein Angus

Wendy Olson & Lori Peterson
 140 Heath Park Lane
 Lewistown, MT 59457
 kdbylori@gmail.com
 (406) 538-9615 • (406) 745-2782

Stevenson Angus Ranch

Bob & Robin Stevenson
 PO Box 292
 Hobson, MT 59452
 bobandrobinstevenson@hotmail.com
 (406) 350-5453
 www.StevensonAngus.com

See ad on page 11

Stevenson Angus Ranch

Darrell & Sara Stevenson
 428 Birky Rd.
 White Sulphur Springs, MT 59645
 stevenson.darrell@yahoo.com
 (406) 350-5443
 www.StevensonAngus.com

See ad on page 11

Stevenson Down T

Darrel and Sara Stevenson
 428 Birky Rd
 White Sulphur Springs, MT 59645
 stevenson.darrell@yahoo.com
 (406) 350-5443
 www.StevensonAngus.com

See ad on page 11

Stevenson, Doug, Sharon, Nicole

See Basin Angus Ranch

Stevenson's Diamond Dot, Inc.

Clint Stevenson
 PO Box 178
 Hobson, MT 59452
 stevensonsddot@yahoo.com
 (406) 366-9023 • (406) 374-2250
 9388 MT Hwy 400
 www.StevensonsDiamondDot.com

Stone's Blackrock Cattle

Owen Stone
 163 Stone Blvd
 Geraldine, MT 59446
 sbrcattle@gmail.com
 (406) 737-4257
 www.SBRCattle.com

Summit Angus Ranch

Roger & Sandy Jacobs
 7445 Hwy. 312 East
 Billings, MT 59105
 auctions@jacobslivestock.com
 (406) 373-6124 • (406) 698-7686
 www.JacobsLivestock.com

See ad on page 47

Sutherlin, Chad & Lacey
See 3C Cattle LLC

Sutherlin, Cody
See 406 Cattle

Swanson, Daryle & Pam
See Apex Angus

Swanson, Clint & Lori
See Shipwheel Cattle Co.

T

Thielen, Bob & Missy
See Cactus Cattle Company

Thiessen, Russell & Jill
See Regency Acres

Thomas Livestock Services
Jeff Thomas
419 Sanders Avenue
Bozeman, MT 59718 • (406) 581-8859
jeffthomas138@gmail.com
See ad on page 86

Thompson, Harvey & Lynn
See Braun Creek Angus

Thompson, Jesse
See Montana Angus Association

Thousand Hills Angus
Rick Van Dyken
85 Lone Mountain Road
Toston, MT 59643
andy@thousandhillsangus.com
(406) 570-1337
www.ThousandHillsAngus.com
See ad on page 61

Timber Line Ranch
Jake & Jane Callantine
3689 Flathead Pass Rd.
Belgrade, MT 59714
tlangus@gmail.com
(406) 388-2408 • (406) 581-4764
www.TimberLineAngus.com
See ad on Inside Back Cover

Todd, Tim
See Green Mountain Angus Ranch

Tomschin, Logan
6210 Christina West
Hilger, MT 59451
(406) 462-5395

Top Notch Angus
Marvin Cross
13255 Harper's Bridge Road
Missoula, MT 59808
topshelf@itstriangle.com
(406) 262-3127
www.TopNotchAngus.com

Trangmoe Angus Ranch
Jim & Robin Trangmoe
192 Road 250
Glendive, MT 59330
7cross@midrivers.com
(406) 687-3315 • (406) 989-3315
7cross@midrivers.com

Trangmoe, Jim & Robin
See Trangmoe Angus Ranch

Treasure Bull Test
Ryan & Karnell Perry
P.O. Box 1
Power, MT 59468
info@treasurebulltest.com
(406) 788-9869 • (406) 390-5473
www.TreasureBullTest.com

Trexler Angus
Larry Trexler
455 Coach Lane
Hamilton, MT 59840
skalcreek@msn.com
(406) 363-8818

Tri Mountain Angus
Gregory W. Field
2927 Hwy. 284 • Townsend, MT 59644
gwfield58@gmail.com
(406) 266-4464 • (406) 439-4505



GOLLAHER RANCH
3112 Cascade Hound Creek Road
Cascade, MT 59421

A small group of our
**TOP
PERFORMANCE
BULLS**
Will Be
For Sale In The Spring

Ted & Delight Gollaher | Ted: 406.750.5301
gollaherranch@yahoo.com | www.gollaherranch.net



GNERER ANGUS

PRODUCING QUALITY BULLS BY FOCUSING ON A SUPERIOR COW

Join us at the ranch near Olive, MT on
MARCH 16, 2024
for our annual sale!

Watch for info coming soon on our female sale this fall!

CHRIS GNERER 406-427-5293 WWW.GNERERANGUS.COM JOE GNERER 406-498-6113

Find us on Facebook

HMA

Turley, David O & Altana

1635 Fishel Creek Rd
Musselshell, MT 59059
(406) 947-2310

Turner Angus

Paul D. Turner
PO Box 145 • Shelby, MT 59474-0145
pturner@northerntel.net
(406) 337-3800
www.TurnerAngus.com

Turner Meadow Ranch

Mark Ahearn
1615 VanZandt CR 3416
Wills Point, TX 75169
tmranch@aol.com • (972) 742-7789

Tusler, Bill & Vicky

See Ash Creek Angus

U**Universal Semen Sales**

Chase Murray
7 Tourmaline Lane
Great Falls, MT 59404
chase@universalsemensales.com
(800) 227-8774 • (406) 453-0374
www.UniversalSemenSales.com
See ad on page 25

V**Van Dyke Angus Ranch**

Lee Van Dyke
8295 Highline Road
Manhattan, MT 59741
(406) 579-2585 • (406) 579-0798
www.VDAR.com • lvandyke@vdar.com
Tim Crabtree: (406) 579-0798

Van Dyke Angus Ranch

Tom Wulff
12393 Frontage Rd.
Manhattan, MT 59741
twulff@vdar.com • (406) 580-1606
www.VDAR.com
Lee Van Dyke: (406) 579-2585
Charles Pera: (406) 922-7077

Van Dyke-Crowder, Amy

See VanDy Creative

Van Dyke, Lee

See Van Dyke Angus Ranch

Van Dyke, Ron & Kathy

See Wheeler Mountain Ranch

Van Dyken, Rick

See Thousand Hills Angus

Van Gelder, Dallas

See VGA Livestock

VanDy Creative

Amy Van Dyke-Crowder
808 Dimaggio Drive
Belgrade, MT 59714
amy@vandycreative.com
(406) 388-1291 • (406) 570-3476
www.VanDyCreative.com

Veltkamp Angus Ranch

Darin Veltkamp
6485 Highline Rd.
Manhattan, MT 59741
dveltkamp@hotmail.com • (406) 539-8564
www.VeltkampAngus.com

Vennes, Gail

See GaLor Angus

Vermilion Ranch

PO Box 30758
Billings, MT 59105
bcook@cattleplus.com
(406) 670-0078 • (406) 861-5664
www.VermilionRanch.com
See ad on page 5

VGA Livestock

Dallas Van Gelder
14390 Churchill Rd.
Manhattan, MT 59741
dallas.vangelder@gmail.com
montanavg7@gmail.com
vgalivestock@gmail.com
Carol: (406) 570-6452 • (406) 581-8086
www.VGALivestock.com

Vincent, Bryan

See B & K Livestock

Vitt, Jim, Dale, or Cody

See Bar JV Angus

Voss, Dennis & Erica

See Horse Butte Ranch

W**Wacker, Duane & Julie**

See A Bar Angus

Wagner, Darryl & Kari

See J L Farms Inc.

Wall, Gary

3934 Victory Circle #36
Billings, MT 59102
garyw@origen-beef.com
(406) 208-8536

Walling, Gladys

PO Box 55
Winifred, MT 59489
gladwall@mtintouch.net
(406) 462-5330

Ward's Flying W

Gary Ward
PO Box 69 • Gallatin Gateway, MT 59730
(406) 580-4488

Warehime Angus

John & Valarie Warehime
30871 Byoh Lane
Potomac, MT 59823-9648
wareangus@yahoo.com
(406) 244-5526

Warner, Kevin M.

See WildKat Angus

West Wind Angus Ranch

Stacey & Michelle Gravenhof
402 Johnson Road • Roundup, MT 59072
westwindangusranch@gmail.com
(507) 360-7969
www.WestWindAngusRanch.com

Western Management, LLC.

David & Seana Brown
PO Box 2378
Big Fork, MT 59911
westernmanagementllc@gmail.com
(406) 210-5605

Westra Angus

Bernie & Kurt Westra
3525 Heeb Road
Manhattan, MT 59741
berniemayra@littleappletech.com
(406) 282-7618

Wetstein, Kevin & Kieth

PO Box 98
Edgar, MT 59026
(406) 962-9920

Wheeler Mountain Ranch

Ron & Kathy Van Dyke
129 Ridder Lane
Whitehall, MT 59759 • (406) 287-9234
wheelermt@hotmail.com
www.WheelerMountainRanch.com

MONTANA ANGUS ASSOCIATION
BOARD OF DIRECTORS

Chad Denowh, 1st Vice President
Gartner-Denowh Angus Ranch
34750 Country Road 127
Sidney, MT 59270
(406) 798-3541 H • (406) 489-1762
chadd@midrivers.com

Kevin Arntzen, 1st Vice President
Arntzen Angus
231 Christina West
Hilger, MT 59451
(406) 462-5570 H • (406) 350-1612 C
karntzen14@yahoo.com

Bill Cook, 2nd Vice President
C Spear Angus
1980 Nth 5th Rd.
Huntley, MT 59037
cookbill44@gmail.com
(406) 670-0689

Kim Skinner, Director
Skinner Ranch Seedstock
46 Farm to Market Rd. W.
Hall, MT 59837 • (406) 581-1852 C
skinnerranch@hotmail.com

Darrell Stevenson, Director
Stevenson Angus Ranch
428 Birky Road
White Sulphur Springs, MT 59645
(406) 350-5443 C
stevenson.darrell@yahoo.com

Kurt Swanson, Director
Apex Angus
8805 Valier Hwy
Valier, MT 59486
(406) 279-3341 H • (406) 799-7026
kcme@3rivers.net

Andee Peterson, Director
Peterson Grain & Cattle
32116 Road 230 N
Havre, MT 59501
(406) 945-2717 C
andreebrook@gmail.com

Brian Barragree, Director
Barragree Cattle Co.
PO Box 562
Absarokee, MT 59001
(406) 780-1219
barragreecattleco@hotmail.com

Rick Van Dyken, Director
Thousand Hills Angus
85 Lone Mountain Road
Toston, MT 59643
blkcttle@aol.com • (406) 581-2078

Whistling Winds Angus, Inc.
David Sattoriva
14504 Rd. 6 N.
Hingham, MT 59528
whistlingwinds@hotmail.com
(406) 390-1471 • (406) 397-3386
www.WhistlingWindsAngus.com
See ad on page 72

Whiteman, Shane
190 Ferdig Rd
Oilmont, MT 59466

WildKat Angus
Kevin M. Warner
1233 Western Skies Trail
Stevensville, MT 59870
kwarner1148@gmail.com
(406) 552-7258

Willekes Angus
Bob Willekes
10 Cowboy Way • Choteau, MT 59422
mtmarblegranite@yahoo.com
(406) 590-2520

Williams & McDonnell families
See Midland Bull Test

Williams Angus Ranch
Dana or Tyler Williams
143 Jewett Lane
Three Forks, MT 59752 • (406) 579-0460
wmsangus@hotmail.com
www.WilliamsAngus.com

Winding River Angus
Louis & Kathy Dubs & Family
4910 Custer • Billings, MT 59106
windingriverangus@gmail.com
(406) 652-7515
www.WindingRiverAngus.com
See ad on page 74

Windy Ridge Angus
Karen Harrer Davis
PO Box 336 • Geraldine, MT 59446
windyridge@itstriangle.com
(406) 737-4320

Wittkopp Angus
Curt & Sue Wittkopp
723 MT Hwy. 200 S • Circle, MT 59215
wipangus@midrivers.com
(406) 485-3552 • (406) 974-3552
www.WittkoppAngus.com
Allison Stephens: (406) 939-3428

Woodruff Angus
Rick & Kathy Woodruff
61756 MT Hwy. 212
Charlo, MT 59824
(406) 644-5663

Woodruff, Rick & Kathy
See Woodruff Angus

World West Sire Services Inc.
Scott Spickard
25 Winterpast Lane • Joliet, MT 59041
scott@worldwestsire.com
(406) 628-7510
www.WorldWestSire.com
See ad on Inside Front Cover

Wulff, Tom
See Van Dyke Angus Ranch

X

XC Ranch Inc.
Tom Carey Jr.
2235 Hwy. 69 • Boulder, MT 59632
xcranch@jeffbb.net • (406) 287-5265
Steve Carey: (406) 498-2922

Y

Yadon Angus Ranch
Sally Yadon
7210 #1 Ranch Road
Manhattan, MT 59741
sallyyadon@yahoo.com • (406) 284-6481

Yaeger Ranch
Chris Yaeger
745 Armells Road
Hilger, MT 59451 • (406) 538-3162

Yellowstone Boys & Girls Ranch
Gary Adams
1732 S 72nd Street. W
Billings, MT 59106 • (406) 855-5230
garya@ybgr.org • www.YBGR.org

Younkin Angus Ranch
Chase & Cache Younkin
616 Billingsly Road
Glasgow, MT 59230-2865
younkin@dellnet.com • (406) 367-5406

Younkin Angus Ranch
Jeff Younkin
505 Camas Creek Loop
Hamilton, MT 59840
younkinjeff@live.com
(406) 230-1673

RARE Aberdeen Angus

Semen Available



KING KONG OF SADDLE BUTTE

CALVED 01/16/13 • AAA REG. +17779227

WEDDERLIE EVICTOR	NEWHOUSE EDWIN ELKO
DUNLOUISE COMMANDER BOND	EVISTA OF WEDDERLIE
CHAMPAGNE CHERRY BEE B117	ASHLEY ELMIGHTY
DUNLOUISE EXCALIBUR Y070	CHERRY BEE W/O OF CHAMPAGNE
DUNLOUISE KINDNESS G212	EYESUND OF DUPPLIN
DUNLOUISE KATIE	EJETA OF TEMPLEHOUSE
	RUMOR ERIC OF ABERNYTE
	KAREN OF BOGHALL



JIPSEY JACK OF SADDLE BUTTE

CALVED 01/16/13 • AAA REG. +17779227

EBLIS OF CLASSLOCHIE	RAMBLER OF NEWCROFT
EYESUND OF DUPPLIN	EBONY ESSO OF ROWLEY
EVERGREEN 3 OF DUPPLIN	ISLABANK RIRINGO ERIC
BERNARDO OF CLASSLOCHIE	EVERGREEN OF DUPPLIN
DUNLOUISE JIPSEY CLOVA C095	RAMBLER OF NEWCROFT
CANNAHARS JIPSEY YOKO Y485	BETROTHED OF BALMYRE
	BETRO OF CLASSLOCHIE
	JIPSEY NOVA OF CANNAHARS



KARMA OF SADDLE BUTTE

CALVED 01/22/12 • AAA REG. +17420116

ASHLEY EULAR	EROCO OF BANKHEAD
DUNLOUISE CORTACHY BOY D137	ASHLEY EULONA
CHAMPAGNE CHERRY BEE B117	ASHLEY ELMIGHTY
DUNLOUISE EXCALIBUR Y070	CHERRY BEE W/O OF CHAMPAGNE
DUNLOUISE KINDNESS G212	EYESUND OF DUPPLIN
DUNLOUISE KATIE	EJETA OF TEMPLEHOUSE
	RUMOR ERIC OF ABERNYTE
	KAREN OF BOGHALL

www.SaddleButteRanch.com

Saddle Butte Ranch

Harrison O'Connor

2704 Cottonwood Creek Road
Geyser, MT 59447

406/ 735-4400 • saddleb@3rivers.net

SEEDSTOCK & COMMERCIAL PRIVATE TREATY 2023-2024

*B: = BULLS F: = FEMALES

RANCH	AVAILABLE*				CONTACT	PHONE	LOCATION
	BULLS	BRED HEIFERS	OPEN HEIFERS	COWS			
SEEDSTOCK PRIVATE TREATY 2023-2024							
7 Bar Heart Registered Angus	✓		✓		B: Mar-June, F: Jan-May Greg Gould & Aimee Hachigian-Gould	(406) 866-3513	Ulm, MT
A Bar Angus	✓		✓		B: Jan-Dec, F: Oct-Dec Duane & Julie Wacker	(406) 323-4456	Roundup, MT
Armstrong Angus	✓				Chad Armstrong	(406) 224-0586	Cardwell, MT
B & K Livestock	✓				B: April-June Bryan Vincent	(406) 423-5313	Moccasin, MT
Basin Angus	✓	✓	✓		B: Apr-June, F: Aug-Dec Doug Stevenson	(406) 350-0350	Joliet, MT
Berry, Eli			✓		F: Oct-Dec Eli Berry	(406) 780-0215	Reed Point, MT
Black Pine Farm	✓		✓		B: May-June, F: Nov Bill Jensen	(406) 847-2733	Heron, MT
Blevins Angus				✓	F: Oct-Nov Wayne Blevins	(406) 644-2309	Charlo, MT
Boyd Angus Ranch	✓				B: Apr-May Ellis & Rhonda Boyd	(406) 842-5645	Alder, MT
Braun Creek Angus	✓				B: Jan-Apr, Dec Harvey Thompson	(406) 735-4460	Geyser, MT
BTD Ranch, Inc.	✓		✓		B: Mar, F: Mar Bruce Duncan	(406) 399-6300	Joplin, MT
Christofferson Farms		✓			F: Dec Ross Christofferson	(406) 301-0887	Malta, MT
Cole Creek Angus Ranch	✓			✓	B: Apr-May, F: Oct-Nov Greg Golden	(406) 962-3743	Joliet, MT
Dye Ranch	✓				B: June-July Heather Dye	(406) 350-2793	Windham, MT
Elmore Angus Ranch	✓				B: Jan-July Mike & Casey Elmore	(406) 580-6973	Three Forks, MT
Frosty Creek Angus	✓	✓	✓		B: Jan-Aug F: Mar-Sept Terry Frost	(406) 323-3415	Roundup, MT
GaLor Genetics	✓				Gail Vennes	(406) 431-1009	Townsend, MT
Gardner Angus	✓	✓		✓	B: Dec, F: Dec Ray Gardner	(406) 351-9283	Winnett, MT
Giem Angus	✓				B: Mar Gary Giem	(406) 684-5767	Twin Bridges, MT
Green Mountain Angus Ranch	✓	✓			B: Feb, F: Oct-Nov Tim Todd	(406) 568-2768	Ryegate, MT
Harmon Angus	✓		✓		B & F: Nov, Dec Steve Harmon	(406) 636-4754	Lavina, MT
Hollow Top Angus	✓	✓	✓		B: Oct-Dec, F: Sept-Dec Porter Bennett	(303) 513-9058	Pony, MT
Indreland Ranch				✓	F: Feb Roger Indreland	(406) 932-4232	Big Timber, MT
Infinity Angus	✓				Edwin Miner	(406) 893-7788	Peerless, MT
Jones Creek Ranch	✓				B: Jan-June, Nov-Dec Casey Kombol	(406) 331-0696	Roundup, MT

SEEDSTOCK & COMMERCIAL PRIVATE TREATY 2023-2024

RANCH	<div style="display: flex; justify-content: space-around; font-size: small;"> BULLS BRED HEIFERS OPEN HEIFERS COWS </div>				AVAILABLE*	CONTACT	PHONE	LOCATION
Kimm Angus	✓	✓			B: Feb-May, F: Oct-Nov	Tom Kimm	(406) 209-2653	Manhattan, MT
Les Craft Angus	✓	✓	✓	✓	B: Jan-May, F: Oct-Nov	Les Craft	(406) 322-6158	Columbus, MT
LK Bar Angus	✓				B: Jan-Apr	Larry Krein	(406) 253-5692	St. Ignatius, MT
Lund's B Bar Angus Ranch		✓			F: Oct	Steve Lund	(406) 978-3634	Wibaux, MT
Malcolm Mile-Hi Ranch	✓	✓	✓	✓	B: Mar-May, F: July-Sept	Asha Malcolm	(406) 223-1657	Livingston, MT
Miske Ranch	✓	✓	✓		B: May-June, F: Jan-Sept	Robert Miske	(406) 796-8102	Wibaux, MT
Murphy Angus	✓		✓		B: Apr-May, F: Apr-June	Brad Murphy	(406) 539-7041	Winnet, MT
Mydland Angus Ranch	✓		✓		B: Feb-July, F: Mar-July	Danny and Corie Mydland	(406) 962-3404	Joliet, MT
Neal Ranch	✓				B: Apr-June	Lyle Neal	(406) 639-2505	Lodge Grass, MT
Peterson Angus	✓			✓	B: Mar-June, F: Nov-Dec	Randy Peterson	(406) 240-5897	Drummond, MT
Pleasant Valley Angus	✓		✓		B: Mar-May, F: Jan	Cory Foss	(406) 489-0809	Sidney, MT
Reddin Angus	✓		✓		B: Feb-May, F: Oct-Dec	Jake Reddin	(406) 821-4442	Darby, MT
Reisig Cattle	✓	✓			B: Jan-April	Dustin Reisig	(406) 350-1800	Hardin & Lewistown, MT
Sand Rock Angus	✓		✓	✓	B: Jan-Dec, F: Nov-Dec	Bob Smith	(406) 427-5745	Broadus, MT
Sarpy Creek Angus Ranch	✓		✓		B: Apr-June	Jim Millar	(406) 342-5813	Hysham, MT
Sevens Livestock	✓				B: March	Ben, Karli Johnson	(406) 480-2953	Choteau, MT
Sitz Angus	✓	✓		✓	B: Dec, F: Dec	Jim Sitz	(406) 683-5277	Dillon, MT
Trexler Angus	✓	✓	✓		B: Jan-June	Larry Trexler	(406) 363-8818	Hamilton, MT
Tri Mountain Angus	✓	✓			F: Nov	Greg Field	(406) 266-4464	Townsend, MT
Van Gelder Angus	✓	✓	✓	✓	B: March-July, F: Jan-Mar, Oct-Dec	Dallas Van Gelder	(406) 581-8086	Manhattan, MT
West Wind Angus Ranch	✓	✓	✓		B: Feb-June, F: Jan, Sept-Dec	Stacey, Michelle Gravenhof	(507) 360-7969	Roundup, MT
WildKat Angus	✓	✓	✓		B: April, F: April-May	Kevin Warner	(406) 552-7258	Stevensville, MT
Winding River Angus	✓				B: Mar-May	Kathy Dubs	(406) 652-7515	Bridger, MT

*B: = BULLS F: = FEMALES

*Production Sale and Private Treaty Information will be listed on the 2023-2024 Sales & Events Calendar published in the Annual Directory, Montana Angus News and on the Association website. These listings are a benefit of your membership.

SEEDSTOCK & COMMERCIAL PRIVATE TREATY 2023-2024

*B: = BULLS F: = FEMALES

RANCH	BRED HEIFERS		OPEN HEIFERS		AVAILABLE*	CONTACT	PHONE	LOCATION
	✓		✓					
COMMERCIAL PRIVATE TREATY 2023-2024								
7 Bar Heart		✓			F: Jan-May	Greg Gould & Aimee Hachigian-Gould	(406) 866-3513	Ulm, MT
Armstrong Angus	✓				F: Oct-Dec	Chad Armstrong	(406) 224-0586	Cardwell, MT
Basin Angus			✓		F: Sept-Dec	Doug Stevenson	(406) 350-0350	Joliet, MT
Boyd Angus Ranch		✓			F: Sept	Ellis Boyd	(406) 842-5645	Alder, MT
Clear Creek Angus	✓				F: Oct-Nov	Teddy Crowley	(406) 395-4962	Chinook, MT
Cole Creek Angus			✓		F: Nov-Dec	Greg Golden	(406) 962-3743	Joliet, MT
Dvorak Angus	✓				F: Oct-Nov	Cathy Dvorak	(406) 366-0564	Lewistown, MT
Dye Ranch		✓			F: Jan, Nov-Dec	Heather Dye	(406) 350-2793	Windham, MT
Hollow Top Angus	✓				F: Sept-Dec	Porter Bennett	(303) 513-9058	Pony, MT
Infinity Angus	✓					Edwin Miner	(406) 893-7788	Peerless, MT
Peterson Angus		✓	✓		F: Nov-Dec	Randy Peterson	(406) 240-5897	Drummond, MT
Veltkamp Angus	✓				F: Oct-Dec	Darin Veltkamp	(406) 539-8564	Manhattan, MT

MONTANA REGIONAL ASSOCIATIONS

Eastern Montana

President: Dale Vitt • (406) 798-3398

V. Pres: Chad Denowh • (406) 798-3541

Sec/Treas: Jill Vitt • (406) 480-9954

North Central Montana

President: Klint Swanson • (406) 357-2492

V. Pres: Jeff Hould • (406) 654-1116

Sec/Treas: Christie Nissen • (406) 357-2643

Central Montana

Chairman: J.R. Lund • (406) 350-1059

Sec/Treas: Corry Arntzen • (406) 366-0511

Midland Empire

President: Duane Wacker • (406) 323-4456

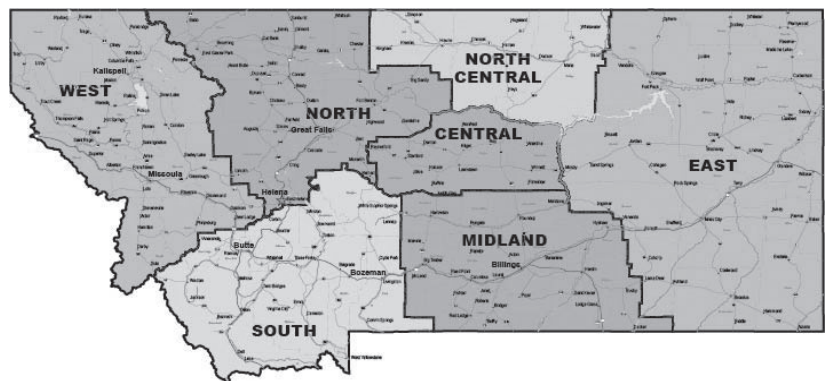
V. Pres: Gary Adams • (406) 655-4505

Sec/Treas: Michelle Gravenhoff • (507) 360-4733

North Montana

President: Jeff Flesch • (406) 337-3402

V. Pres: Mark Deboo • (406) 279-3633



Western Montana

President: Kim Skinner • (406) 581-1852

V. Pres: Craig Blevins • (406) 207-8339

Sec/Treas: Lacey Sutherlin • (406) 544-0043

South Montana

President: Tom Kimm • (406) 209-2653

V. Pres: Bernie Westra • (406) 579-4020

Sec/Treas: Lorrie Vennes • (406) 431-6113



TRI-STATE LIVESTOCK NEWS



Leah Brence

Advertising Account Manager
WY & MT Territory

406-839-1097

lbrence@tsln-fre.com



Brady Williams

Field Service & Ringman
Montana & Wyoming Territory

406-938-3071

bwilliams@tsln-fre.com



TRI-STATE LIVESTOCK NEWS

WHAT RANCHERS READ

Local, national, and international livestock industry news

Livestock auction reports • Award-winning columnists

Classifieds • Special interest sections • Much more!



\$55 OR \$100

ONE YEAR

TWO YEARS

CALL TOLL-FREE: (877) 347-9100

VISIT US ONLINE FOR THE LATEST STORIES, SALE REPORTS, UPDATES & SUBSCRIBE!

www.TSLN.com

*\$100 for 104 issues (2 years) and \$55 for 52 issues (one year) rate valid for new subscribers. Special rate not dependent on length of subscription. Already a subscriber? Call today to check on promotional rates for renewals! Must call 877-347-9100 to subscribe at this rate. Subscribers will be billed one time at \$90 for 104 issues or \$50 for 52 issues. All subscriptions include full digital access to our online edition at www.tsln.com. A sincere thanks from all of us here at Tri-State Livestock News.

3C Cattle	51	Bobcat Angus	87	FBA Angus	42
Agribest Feeds	40	C Spear Angus	71	Flesch Angus	39
Agri-Media Livestock Group	86	Cactus Cattle Company	42	Gartner-Denowh	88
Apex Angus	55	Cattle Business Weekly	46	Goggins, Joe	52
Armstrong Angus	16	Circle L Angus	41	Gnerer Angus	79
Arntzen Angus	15	Clear Creek Angus	53	Gollaher Ranch	78
Ballyhoo Printing & Design	8	Cole Creek Angus	10	Green Mountain Angus	1
Bar JV Angus	65	Coleman Angus	2	Hilltop Angus	73
Basin Angus Ranch	Back	Currant Creek	50	Hinman Angus	22
Beef 360	24	Diamond D Angus	14	Hollow Top Angus	44-45

Start planning for your production sales now!



Agri-MEDIA LIVESTOCK GROUP

Providing more Livestock Marketing Coverage and Service than any other media in the business!

Lee Agri-Media publications go to over 160,000 livestock producers!

ENTER THE DIGITAL AGE STRATEGIC | EXPERIENCED
TRANSPARENT RESULTS-DRIVEN

CONNECTING YOUR BUSINESS WITH THE RIGHT AUDIENCES!



Jeff Thomas
The Prairie Star
Cell: 406-581-8859
jeffthomas138@gmail.com

- Traditional Print**
- Email Marketing**
- Ring Service**
- Audience Targeting**
- Facebook and or Instagram Targeting**
- Website Builds**

Jacobs Livestock Sales	47
JC Heiken Angus	43
KG Ranch	17
Lund's B Bar Angus	58
Math Farms	75
McDonnell Beef Country Genetics	12
Medicine Rocks Angus	60
Midcontinent Livestock Supp.	62
Midland Bull Test	69
Montana Grafix	64
Mountain View Insurance	63
Northern Ag Network	9
NutraLix	66
ORigen	76
Ox Bow Ranch	57
Peterson Grain & Cattle	67
Pine Coulee Angus	7
Reminisce Angus Ranch	4, 49
Reyher Embryonics	68
Rollin' Rock & PEDE Associates	13
Saddle Butte Ranch	81
Shipwheel Cattle Company	70
Sitz Angus	3
Skinner Ranch Seedstock	18-19
Split Diamond Angus	59
Stevenson Angus Ranch	11
Thousand Hills Angus	61
Timber Line Ranch	Inside Back Cover
TriState Livestock News	85
Universale Semen Sales	25
Vermilion Ranch	5
Whistling Winds Angus	72
Winding River Angus	74
World West Sire Services	IFC

Top quality bred heifers...calves included

DECEMBER 15, 2023

- 160 Angus Bulls
- 900 Females Sell

19th ANNUAL
PRODUCTION SALE

WESTERN
LIVESTOCK AUCTION
Great Falls, Montana

12:30 PM

Bobcat
B ANGUS

GALATA, MONTANA

Bryan Ratzburg:
(406) 937-5858
Cell: (406) 788-3272

Ernie Ratzburg:
Cell: (406) 788-3244

bobcatangus@northerntel.net

www.bobcatangus.com

GDAR

*Put some Cow
Back Into Your Cowherd*

Featuring sons by

Justified	Ace	Lockdown
Load Up	All In	Rainmaker
Testament	Recap	Accomplishment

Gartner ~ Denowh
ANGUS RANCH

Mick Denowh Paul Denowh Chad Denowh
406-798-3355 406-798-3375 406-489-1762

www.gdar-angus.com

250 Yearling Bulls
250 Commercial Heifers
March 28, 2024

1:00 MDT at the ranch • Sidney, MT



DVAuction





Bred for Business
BULL & FEMALE SALE
04.19.24



JAKE CALLANTINE 406.581.4764
TIMBERLINEANGUS.COM

A Lasting Legacy Elite Female Sale

SATURDAY | OCTOBER 21, 2023 | 6 PM MDT

BILLINGS LIVESTOCK COMMISSION | BILLINGS, MONTANA



*Selling
40 Cows
35 Bred Heifers
25 Heifer Calves*

Basin Rita M50

19462959



Sired by Basin Deposit 6249. The Dam of Basin Jefferson 1104 and Basin Klondike 2505, two of the heaviest used sires at Basin Angus this year.

Selling one-half embryo interest in this POWER DONOR. Progeny selling include heifer calves sired by SITZ Incentive and G A R Sunbeam, along with bred heifers sired by Basin Payweight Plus 6048 and Ellingson Rangeland.

Basin Joy F311

18832545



Sired by Basin Payweight 1682. A prolific donor with 14 sons that have averaged \$10,400 in our bull sales and half interest in a bred heifer at the 2022 NILE for \$20,000.

Selling full interest in this HIGHLY PRODUCTIVE female. Also selling an exciting embryo heifer calf sired by Basin Jameson 1076, in addition to powerful bred heifers sired by EZAR Step Up 9178 and Musgrave Exclusive.

www.BasinAngus.com

Doug Stevenson (406) 350-0350

Nicole Stevenson (406) 350-2222

Shane Whiteman (406) 366-0688

Annual Bull Sale March 15th, 2024